

APPENDIX 1

CROSS SECTIONS FOR 1996, 2011, 2014

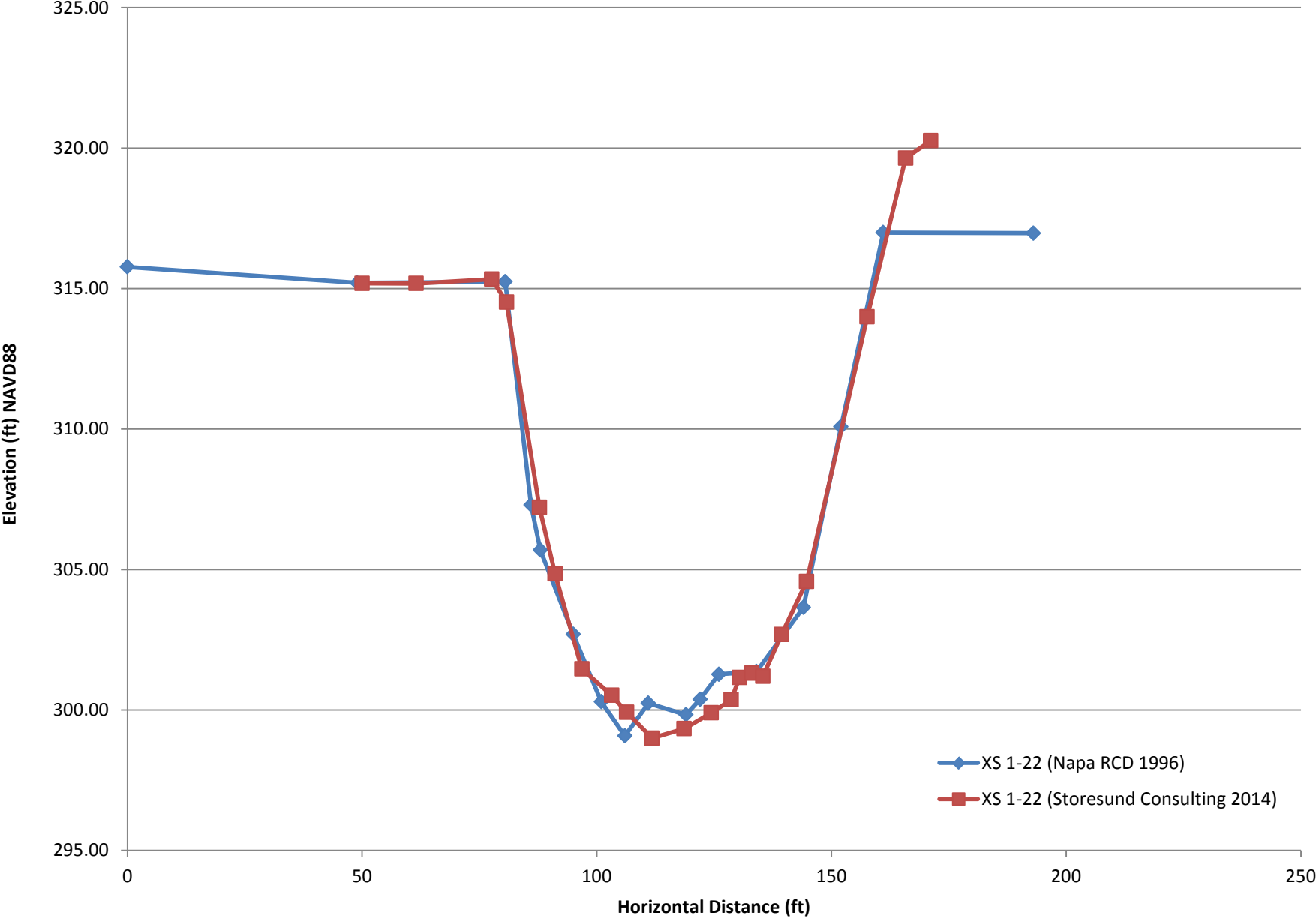
THALWEG SURVEY

UPPER NAPA RIVER

CROSS SECTIONS FOR 1996, 2011, 2014

UPPER NAPA RIVER

Upper Napa River XS 1-22



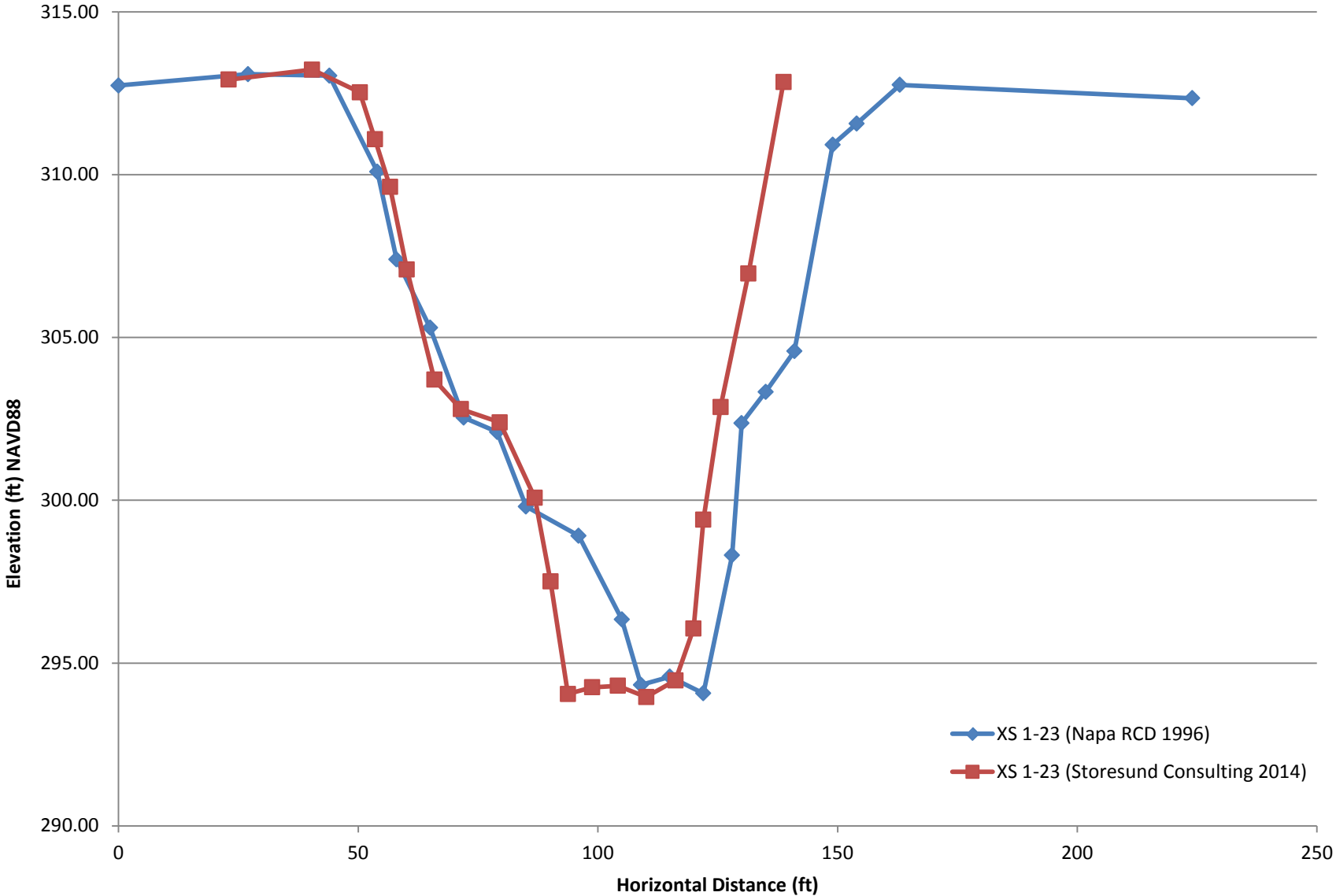
XS 1-22 (Napa RCD 1996)

| | | STA Shift | REF ELEV | | |
|-------|-----|-----------|----------|--|--|
| | | 74 | 320 | | |
| Elev | Sta | ADJ STA | ADJ ELEV | | |
| 3.03 | 119 | 193 | 316.97 | | |
| 3.01 | 87 | 161 | 316.99 | | |
| 9.92 | 78 | 152 | 310.08 | | |
| 16.35 | 70 | 144 | 303.65 | | |
| 18.63 | 60 | 134 | 301.37 | | |
| 18.73 | 52 | 126 | 301.27 | | |
| 19.62 | 48 | 122 | 300.38 | | |
| 20.17 | 45 | 119 | 299.83 | | |
| 19.76 | 37 | 111 | 300.24 | | |
| 20.92 | 32 | 106 | 299.08 | | |
| 19.71 | 27 | 101 | 300.29 | | |
| 17.31 | 21 | 95 | 302.69 | | |
| 14.31 | 14 | 88 | 305.69 | | |
| 12.70 | 12 | 86 | 307.30 | | |
| 4.76 | 6.5 | 80.5 | 315.24 | | |
| 4.80 | -25 | 49 | 315.20 | | |
| 4.23 | -74 | 0 | 315.77 | | |

XS 1-22 (Storesund Consulting 2014)

| | | | STA Shift | REF ELEV | | |
|---------|----------|---------|-----------|----------|--|--|
| | | | 50 | 0 | | |
| Easting | Northing | Elev | ADJ STA | ADJ ELEV | | |
| 6403495 | 1969252 | 315.185 | 50.0 | 315.2 | | |
| 6403490 | 1969242 | 315.179 | 61.5 | 315.2 | | |
| 6403483 | 1969227 | 315.334 | 77.6 | 315.3 | | |
| 6403481 | 1969225 | 314.516 | 80.8 | 314.5 | | |
| 6403480 | 1969218 | 307.217 | 87.8 | 307.2 | | |
| 6403480 | 1969214 | 304.85 | 91.1 | 304.9 | | |
| 6403477 | 1969209 | 301.46 | 96.8 | 301.5 | | |
| 6403474 | 1969204 | 300.522 | 103.2 | 300.5 | | |
| 6403473 | 1969201 | 299.92 | 106.4 | 299.9 | | |
| 6403469 | 1969197 | 298.998 | 111.7 | 299.0 | | |
| 6403465 | 1969191 | 299.335 | 118.6 | 299.3 | | |
| 6403463 | 1969186 | 299.9 | 124.4 | 299.9 | | |
| 6403460 | 1969183 | 300.368 | 128.6 | 300.4 | | |
| 6403459 | 1969181 | 301.16 | 130.4 | 301.2 | | |
| 6403458 | 1969179 | 301.309 | 133.0 | 301.3 | | |
| 6403457 | 1969177 | 301.198 | 135.4 | 301.2 | | |
| 6403457 | 1969173 | 302.684 | 139.4 | 302.7 | | |
| 6403457 | 1969168 | 304.576 | 144.7 | 304.6 | | |
| 6403452 | 1969156 | 313.994 | 157.6 | 314.0 | | |
| 6403449 | 1969148 | 319.643 | 165.8 | 319.6 | | |
| 6403446 | 1969144 | 320.265 | 171.1 | 320.3 | | |

Upper Napa River XS 1-23



XS 1-23 (Napa RCD 1996)

STA Shift REF ELEV

44 318

| Elev | Sta | ADJ STA | ADJ ELEV |
|-------|-----|---------|----------|
| 5.65 | 180 | 224 | 312.35 |
| 5.24 | 119 | 163 | 312.76 |
| 6.43 | 110 | 154 | 311.57 |
| 7.08 | 105 | 149 | 310.92 |
| 13.42 | 97 | 141 | 304.58 |
| 14.67 | 91 | 135 | 303.33 |
| 15.63 | 86 | 130 | 302.37 |
| 19.69 | 84 | 128 | 298.31 |
| 23.93 | 78 | 122 | 294.07 |
| 23.42 | 71 | 115 | 294.58 |
| 23.67 | 65 | 109 | 294.33 |
| 21.66 | 61 | 105 | 296.34 |
| 19.09 | 52 | 96 | 298.91 |
| 18.19 | 41 | 85 | 299.81 |
| 15.90 | 35 | 79 | 302.10 |
| 15.46 | 28 | 72 | 302.54 |
| 12.70 | 21 | 65 | 305.30 |
| 10.60 | 14 | 58 | 307.40 |
| 7.91 | 10 | 54 | 310.09 |
| 4.96 | 0 | 44 | 313.04 |
| 4.91 | -17 | 27 | 313.09 |
| 5.26 | -44 | 0 | 312.74 |

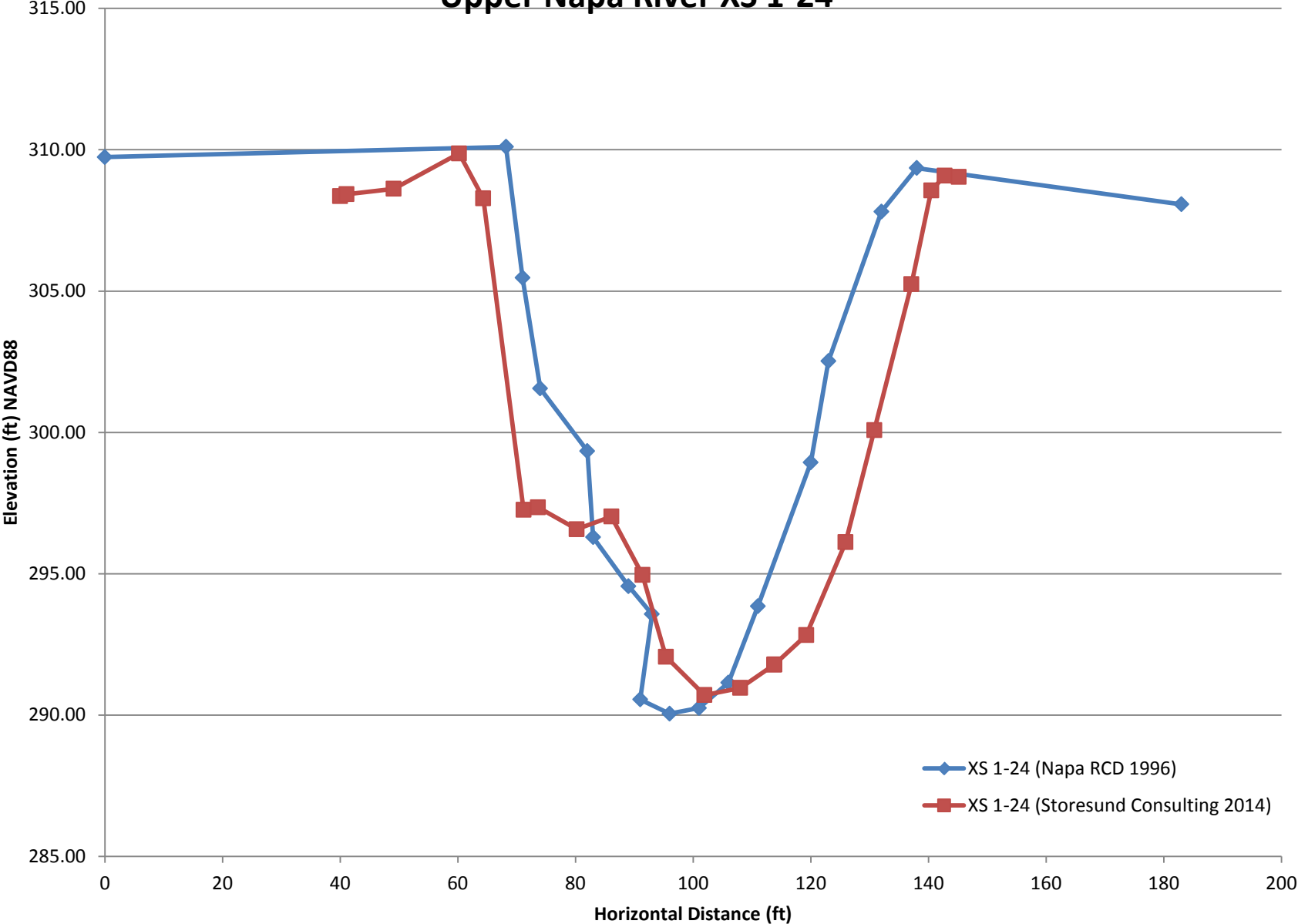
XS 1-23 (Storesund Consulting 2014)

STA Shift REF ELEV

23 0

| Easting | Northing | Elev | ADJ STA | ADJ ELEV |
|---------|----------|---------|----------|----------|
| 6404400 | 1968586 | 312.921 | 23 | 312.921 |
| 6404388 | 1968573 | 313.227 | 40.38777 | 313.227 |
| 6404380 | 1968567 | 312.531 | 50.35857 | 312.531 |
| 6404378 | 1968565 | 311.093 | 53.49949 | 311.093 |
| 6404376 | 1968563 | 309.626 | 56.63953 | 309.626 |
| 6404374 | 1968560 | 307.09 | 60.15456 | 307.09 |
| 6404370 | 1968556 | 303.705 | 65.90221 | 303.705 |
| 6404365 | 1968553 | 302.8 | 71.45006 | 302.8 |
| 6404359 | 1968548 | 302.394 | 79.53572 | 302.394 |
| 6404352 | 1968546 | 300.075 | 86.83966 | 300.075 |
| 6404349 | 1968544 | 297.511 | 90.12705 | 297.511 |
| 6404346 | 1968542 | 294.05 | 93.75285 | 294.05 |
| 6404342 | 1968540 | 294.256 | 98.79145 | 294.256 |
| 6404337 | 1968537 | 294.301 | 104.1639 | 294.301 |
| 6404332 | 1968534 | 293.957 | 110.1066 | 293.957 |
| 6404327 | 1968530 | 294.47 | 116.1888 | 294.47 |
| 6404324 | 1968528 | 296.062 | 119.9454 | 296.062 |
| 6404322 | 1968527 | 299.402 | 122.0068 | 299.402 |
| 6404319 | 1968526 | 302.866 | 125.6021 | 302.866 |
| 6404313 | 1968526 | 306.966 | 131.4189 | 306.966 |
| 6404306 | 1968524 | 312.848 | 138.7421 | 312.848 |

Upper Napa River XS 1-24



XS 1-24 (Napa RCD 1996)

STA Shift REF ELEV

66 315

| Elev | Sta | ADJ STA | ADJ ELEV |
|-------|-----|---------|----------|
| 6.93 | 117 | 183 | 308.07 |
| 5.65 | 72 | 138 | 309.35 |
| 7.19 | 66 | 132 | 307.81 |
| 12.48 | 57 | 123 | 302.52 |
| 16.06 | 54 | 120 | 298.94 |
| 21.15 | 45 | 111 | 293.85 |
| 23.85 | 40 | 106 | 291.15 |
| 24.75 | 35 | 101 | 290.25 |
| 24.95 | 30 | 96 | 290.05 |
| 24.45 | 25 | 91 | 290.55 |
| 21.43 | 27 | 93 | 293.57 |
| 20.44 | 23 | 89 | 294.56 |
| 18.71 | 17 | 83 | 296.29 |
| 15.66 | 16 | 82 | 299.34 |
| 13.45 | 8 | 74 | 301.55 |
| 9.53 | 5 | 71 | 305.47 |
| 4.90 | 2.2 | 68.2 | 310.10 |
| 5.26 | -66 | 0 | 309.74 |

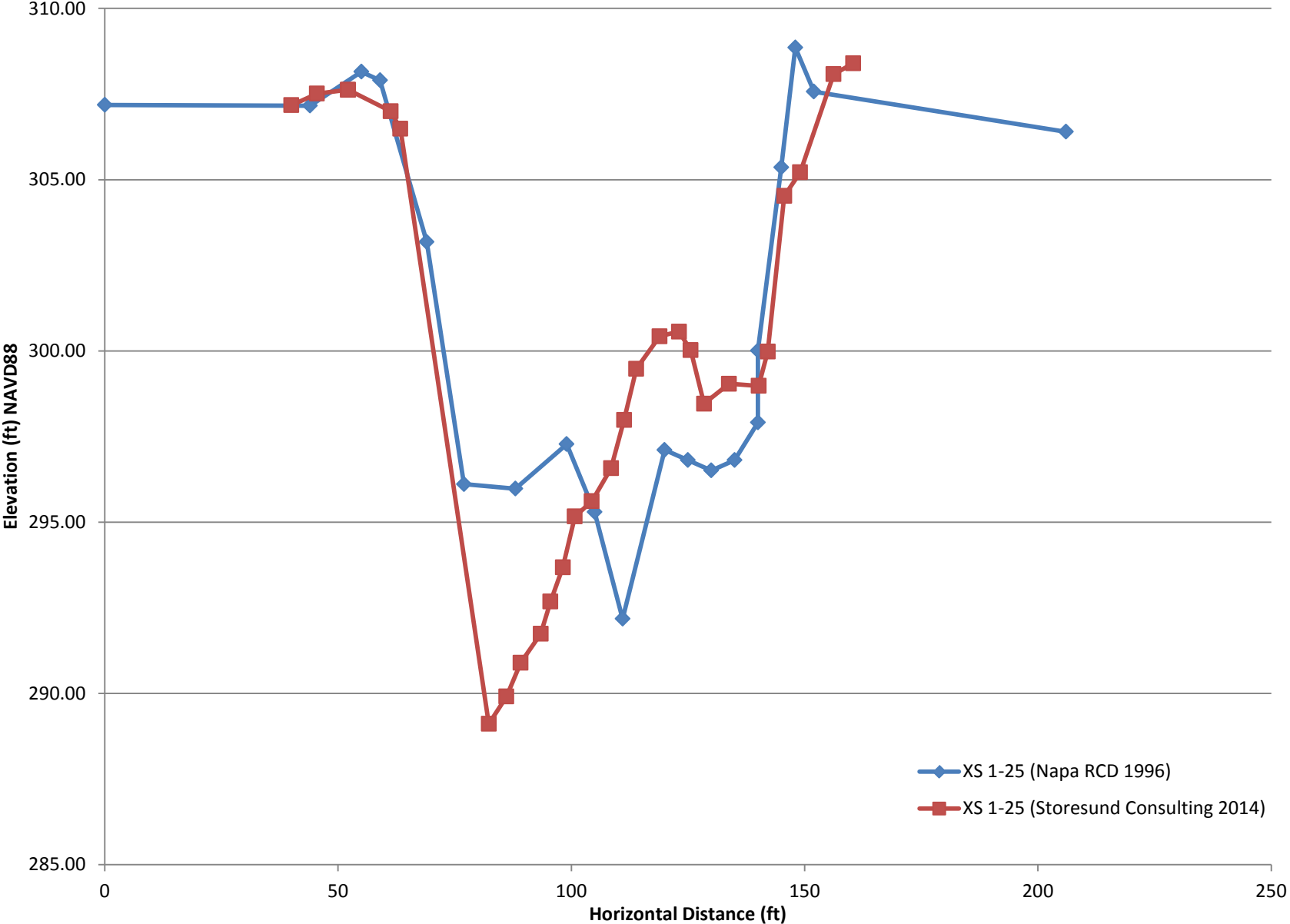
XS 1-24 (Storesund Consulting 2014)

STA Shift REF ELEV

40 0

| Easting | Northing | Elev | ADJ STA | ADJ ELEV |
|---------|----------|---------|----------|----------|
| 6405130 | 1968046 | 308.355 | 40 | 308.355 |
| 6405129 | 1968045 | 308.427 | 41.06066 | 308.427 |
| 6405130 | 1968037 | 308.618 | 49.09324 | 308.618 |
| 6405130 | 1968026 | 309.869 | 60.21043 | 309.869 |
| 6405132 | 1968022 | 308.279 | 64.31759 | 308.279 |
| 6405132 | 1968015 | 297.266 | 71.16718 | 297.266 |
| 6405133 | 1968013 | 297.353 | 73.59951 | 297.353 |
| 6405134 | 1968006 | 296.576 | 80.19712 | 296.576 |
| 6405136 | 1968001 | 297.023 | 86.10617 | 297.023 |
| 6405137 | 1967996 | 294.96 | 91.38223 | 294.96 |
| 6405139 | 1967992 | 292.065 | 95.37064 | 292.065 |
| 6405140 | 1967986 | 290.708 | 101.9329 | 290.708 |
| 6405143 | 1967981 | 290.963 | 107.9992 | 290.963 |
| 6405143 | 1967975 | 291.786 | 113.8001 | 291.786 |
| 6405143 | 1967975 | 291.79 | 113.8143 | 291.79 |
| 6405144 | 1967969 | 292.826 | 119.2159 | 292.826 |
| 6405144 | 1967963 | 296.116 | 125.9019 | 296.116 |
| 6405145 | 1967958 | 300.077 | 130.7929 | 300.077 |
| 6405145 | 1967952 | 305.247 | 137.0996 | 305.247 |
| 6405146 | 1967948 | 308.563 | 140.4827 | 308.563 |
| 6405146 | 1967946 | 309.08 | 142.7732 | 309.08 |
| 6405146 | 1967944 | 309.041 | 145.1626 | 309.041 |

Upper Napa River XS 1-25



XS 1-25 (Napa RCD 1996)

STA Shift REF ELEV

55 313

| Elev | Sta | ADJ STA | ADJ ELEV |
|-------|-----|---------|----------|
| 6.60 | 151 | 206 | 306.40 |
| 5.43 | 97 | 152 | 307.57 |
| 4.14 | 93 | 148 | 308.86 |
| 7.64 | 90 | 145 | 305.36 |
| 12.99 | 85 | 140 | 300.01 |
| 15.09 | 85 | 140 | 297.91 |
| 16.19 | 80 | 135 | 296.81 |
| 16.49 | 75 | 130 | 296.51 |
| 16.19 | 70 | 125 | 296.81 |
| 15.89 | 65 | 120 | 297.11 |
| 20.82 | 56 | 111 | 292.18 |
| 17.70 | 50 | 105 | 295.30 |
| 15.72 | 44 | 99 | 297.28 |
| 17.02 | 33 | 88 | 295.98 |
| 16.89 | 22 | 77 | 296.11 |
| 9.82 | 14 | 69 | 303.18 |
| 5.10 | 4 | 59 | 307.90 |
| 4.85 | 0 | 55 | 308.15 |
| 5.84 | -11 | 44 | 307.16 |
| 5.82 | -55 | 0 | 307.18 |

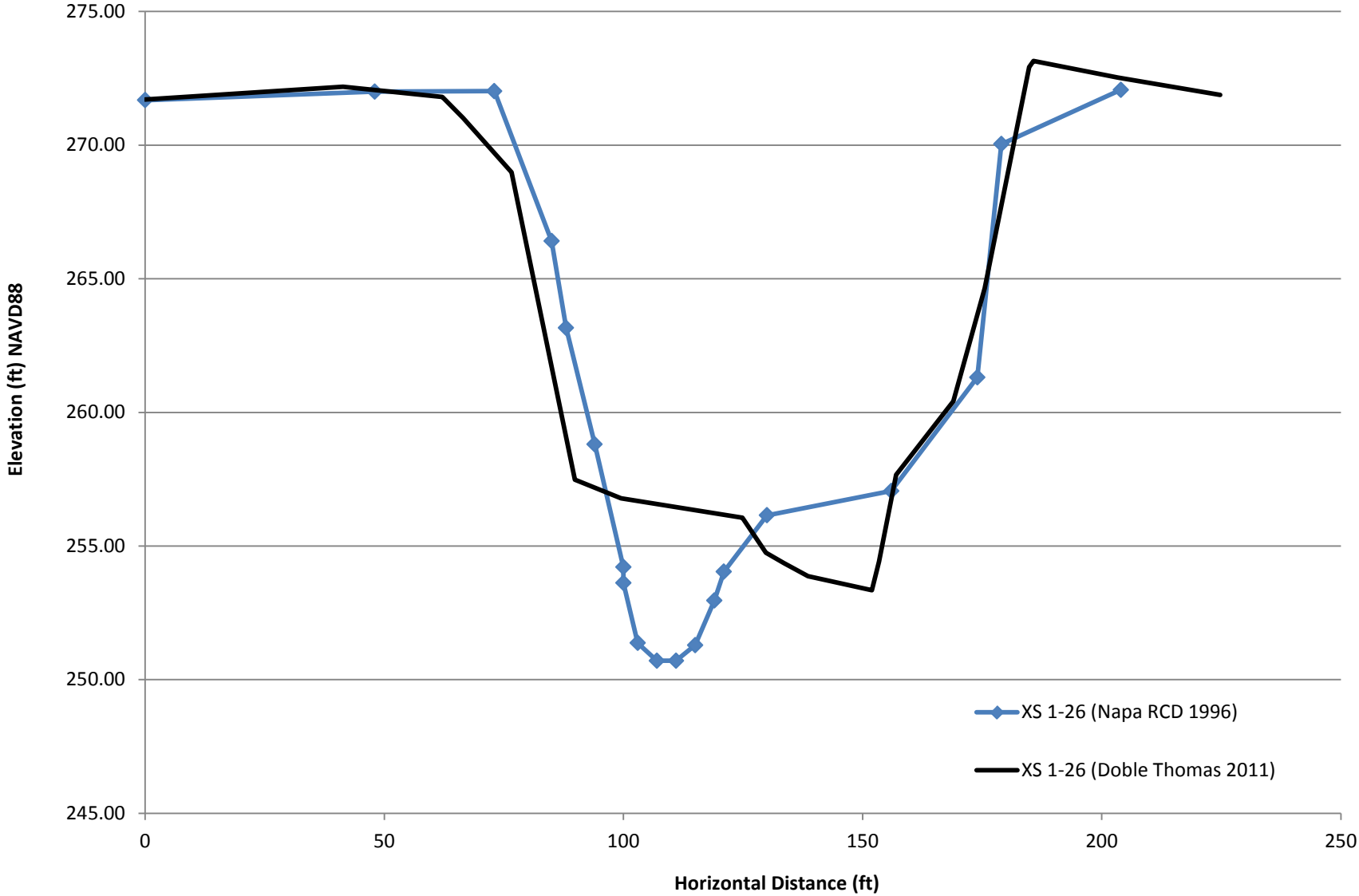
XS 1-25 (Storesund Consulting 2014)

STA Shift REF ELEV

40 0

| Easting | Northing | Elev | ADJ STA | ADJ ELEV |
|---------|----------|---------|----------|----------|
| 6406046 | 1967908 | 307.173 | 40 | 307.173 |
| 6406046 | 1967913 | 307.513 | 45.48687 | 307.513 |
| 6406046 | 1967920 | 307.625 | 52.11103 | 307.625 |
| 6406046 | 1967920 | 307.622 | 52.1529 | 307.622 |
| 6406045 | 1967929 | 306.998 | 61.27035 | 306.998 |
| 6406044 | 1967931 | 306.485 | 63.36858 | 306.485 |
| 6406039 | 1967949 | 289.113 | 82.31124 | 289.113 |
| 6406040 | 1967953 | 289.91 | 86.0726 | 289.91 |
| 6406041 | 1967956 | 290.897 | 89.14845 | 290.897 |
| 6406041 | 1967960 | 291.741 | 93.44614 | 291.741 |
| 6406040 | 1967962 | 292.683 | 95.52479 | 292.683 |
| 6406040 | 1967965 | 293.683 | 98.18253 | 293.683 |
| 6406040 | 1967967 | 295.167 | 100.7538 | 295.167 |
| 6406040 | 1967971 | 295.611 | 104.3742 | 295.611 |
| 6406039 | 1967975 | 296.574 | 108.5312 | 296.574 |
| 6406040 | 1967978 | 297.985 | 111.3232 | 297.985 |
| 6406040 | 1967980 | 299.48 | 113.9215 | 299.48 |
| 6406039 | 1967985 | 300.429 | 118.9232 | 300.429 |
| 6406039 | 1967989 | 300.563 | 123.0623 | 300.563 |
| 6406039 | 1967992 | 300.022 | 125.5716 | 300.022 |
| 6406039 | 1967995 | 298.46 | 128.4612 | 298.46 |
| 6406038 | 1968000 | 299.04 | 133.8016 | 299.04 |
| 6406037 | 1968006 | 298.98 | 140.1547 | 298.98 |
| 6406037 | 1968008 | 299.983 | 142.117 | 299.983 |
| 6406037 | 1968012 | 304.525 | 145.6483 | 304.525 |
| 6406037 | 1968015 | 305.213 | 149.0394 | 305.213 |
| 6406037 | 1968022 | 308.08 | 156.2065 | 308.08 |
| 6406037 | 1968027 | 308.395 | 160.393 | 308.395 |

Upper Napa River XS 1-26



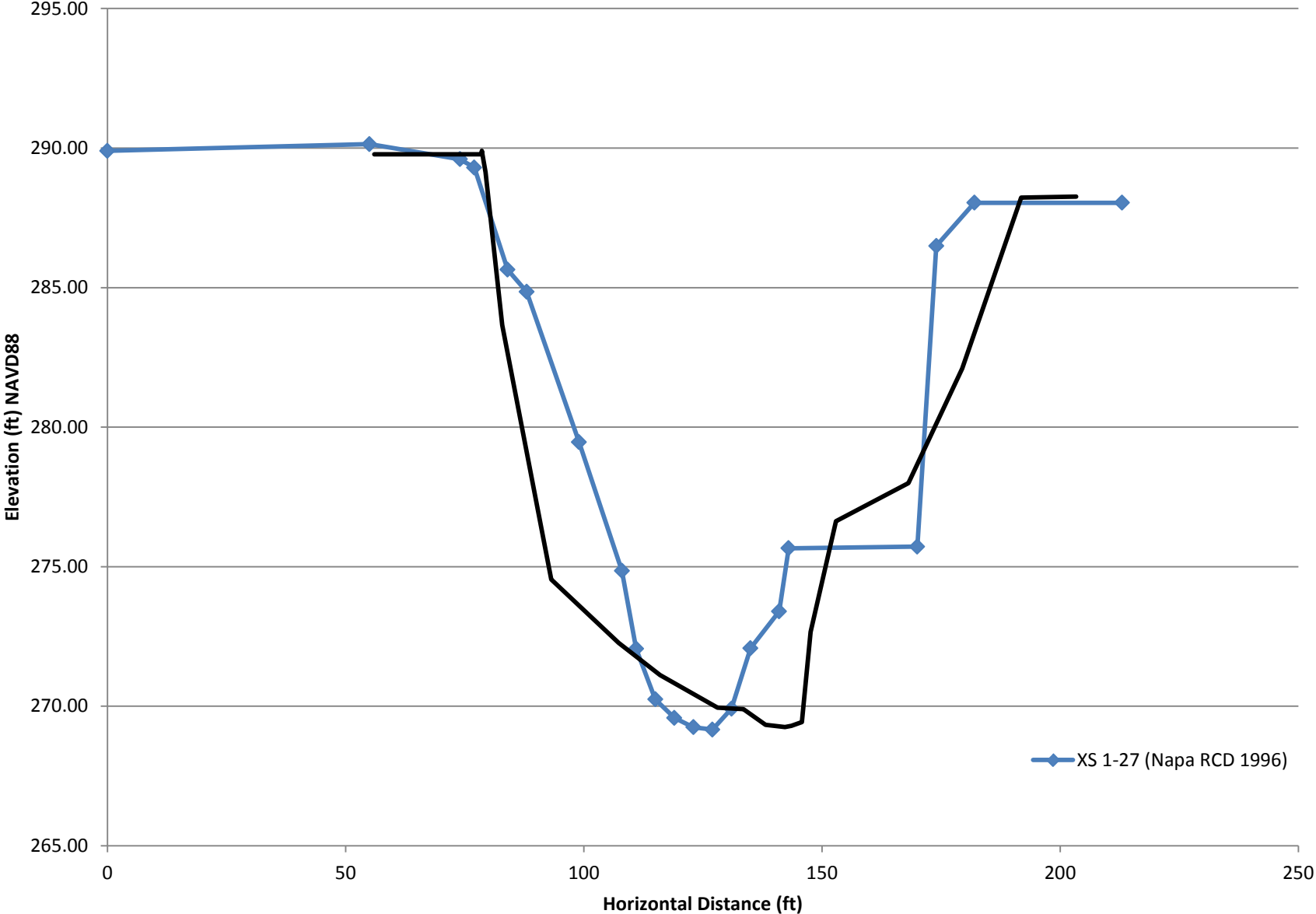
XS 1-26 (Napa RCD 1996)

| | | STA Shift | REF ELEV |
|-------|-----|-----------|----------|
| | | 67 | 277 |
| Elev | Sta | ADJ STA | ADJ ELEV |
| 4.93 | 137 | 204 | 272.07 |
| 6.96 | 112 | 179 | 270.04 |
| 15.69 | 107 | 174 | 261.31 |
| 19.94 | 89 | 156 | 257.06 |
| 20.85 | 63 | 130 | 256.15 |
| 22.96 | 54 | 121 | 254.04 |
| 24.04 | 52 | 119 | 252.96 |
| 25.71 | 48 | 115 | 251.29 |
| 26.29 | 44 | 111 | 250.71 |
| 26.29 | 40 | 107 | 250.71 |
| 25.63 | 36 | 103 | 251.37 |
| 23.38 | 33 | 100 | 253.62 |
| 22.79 | 33 | 100 | 254.21 |
| 18.19 | 27 | 94 | 258.81 |
| 13.84 | 21 | 88 | 263.16 |
| 10.59 | 18 | 85 | 266.41 |
| 4.98 | 6 | 73 | 272.02 |
| 5.00 | -19 | 48 | 272.00 |
| 5.32 | -67 | 0 | 271.68 |

XS 1-26 (Doble Thomas 2011)

| STA | ELEV |
|-------------|---------|
| 0 | 271.706 |
| 41.34214161 | 272.189 |
| 62.14529937 | 271.804 |
| 66.45484808 | 271.021 |
| 66.45484808 | 271.021 |
| 76.61554023 | 268.983 |
| 89.82785464 | 257.479 |
| 99.51621983 | 256.79 |
| 124.8371949 | 256.056 |
| 129.7930097 | 254.752 |
| 133.5660929 | 254.36 |
| 138.5959551 | 253.877 |
| 151.9486422 | 253.346 |
| 153.4103676 | 254.419 |
| 157.015048 | 257.663 |
| 168.937408 | 260.414 |
| 175.5528332 | 264.652 |
| 184.8081662 | 272.924 |
| 185.7039541 | 273.152 |
| 185.7039541 | 273.152 |
| 203.3381192 | 272.525 |
| 224.758802 | 271.882 |

Upper Napa River XS 1-27



XS 1-27 (Napa RCD 1996)

STA Shift REF ELEV

74 294.5

| Elev | Sta | ADJ STA | ADJ ELEV |
|-------|-----|---------|----------|
| 6.46 | 139 | 213 | 288.04 |
| 6.46 | 108 | 182 | 288.04 |
| 8.01 | 100 | 174 | 286.49 |
| 18.78 | 96 | 170 | 275.72 |
| 18.84 | 69 | 143 | 275.66 |
| 21.10 | 67 | 141 | 273.40 |
| 22.42 | 61 | 135 | 272.08 |
| 24.59 | 57 | 131 | 269.91 |
| 25.34 | 53 | 127 | 269.16 |
| 25.25 | 49 | 123 | 269.25 |
| 24.92 | 45 | 119 | 269.58 |
| 24.25 | 41 | 115 | 270.25 |
| 22.44 | 37 | 111 | 272.06 |
| 19.65 | 34 | 108 | 274.85 |
| 15.04 | 25 | 99 | 279.46 |
| 9.65 | 14 | 88 | 284.85 |
| 8.86 | 10 | 84 | 285.64 |
| 5.20 | 3 | 77 | 289.30 |
| 4.90 | 0 | 74 | 289.60 |
| 4.36 | -19 | 55 | 290.14 |
| 4.60 | -74 | 0 | 289.90 |

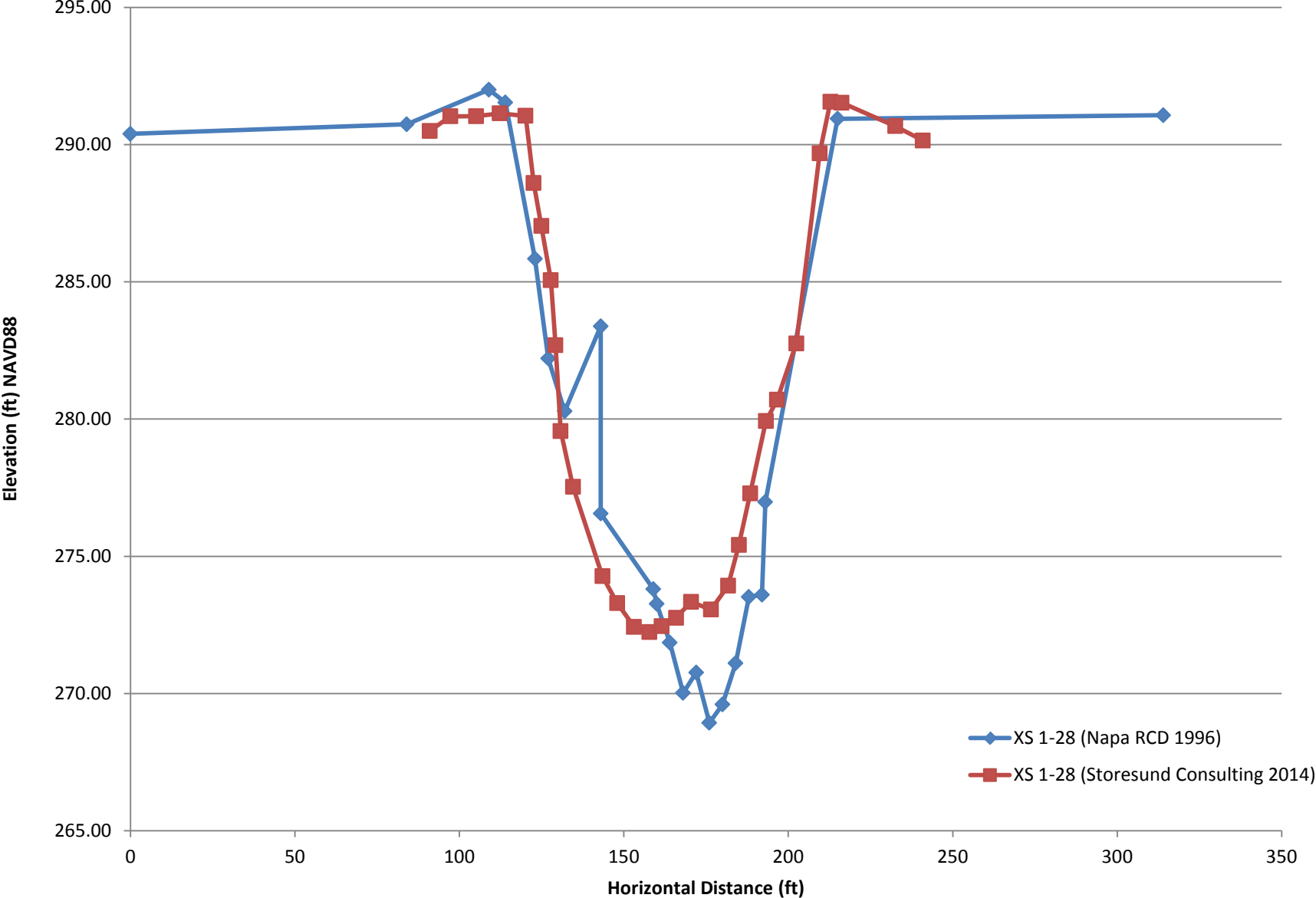
XS 1-27 (Doble Thomas 2011)

STA Shift REF ELEV

56

| STA | ADJ STA | ADJ ELEV |
|----------|----------|----------|
| 0 | 56 | 289.801 |
| 22.5832 | 78.5832 | 289.779 |
| 22.5832 | 78.5832 | 289.779 |
| 23.38366 | 79.38366 | 289.899 |
| 26.87757 | 82.87757 | 289.137 |
| 37.14566 | 93.14566 | 283.659 |
| 51.30506 | 107.3051 | 274.546 |
| 59.98957 | 115.9896 | 272.265 |
| 72.08366 | 128.0837 | 271.122 |
| 77.48857 | 133.4886 | 269.95 |
| 82.13561 | 138.1356 | 269.898 |
| 86.20717 | 142.2072 | 269.335 |
| 87.59054 | 143.5905 | 269.254 |
| 89.77841 | 145.7784 | 269.295 |
| 91.58131 | 147.5813 | 269.434 |
| 96.94764 | 152.9476 | 272.662 |
| 112.1064 | 168.1064 | 276.634 |
| 123.406 | 179.406 | 277.991 |
| 135.8091 | 191.8091 | 282.097 |
| 147.3517 | 203.3517 | 288.22 |
| 168.3897 | 224.3897 | 288.26 |

Upper Napa River XS 1-28



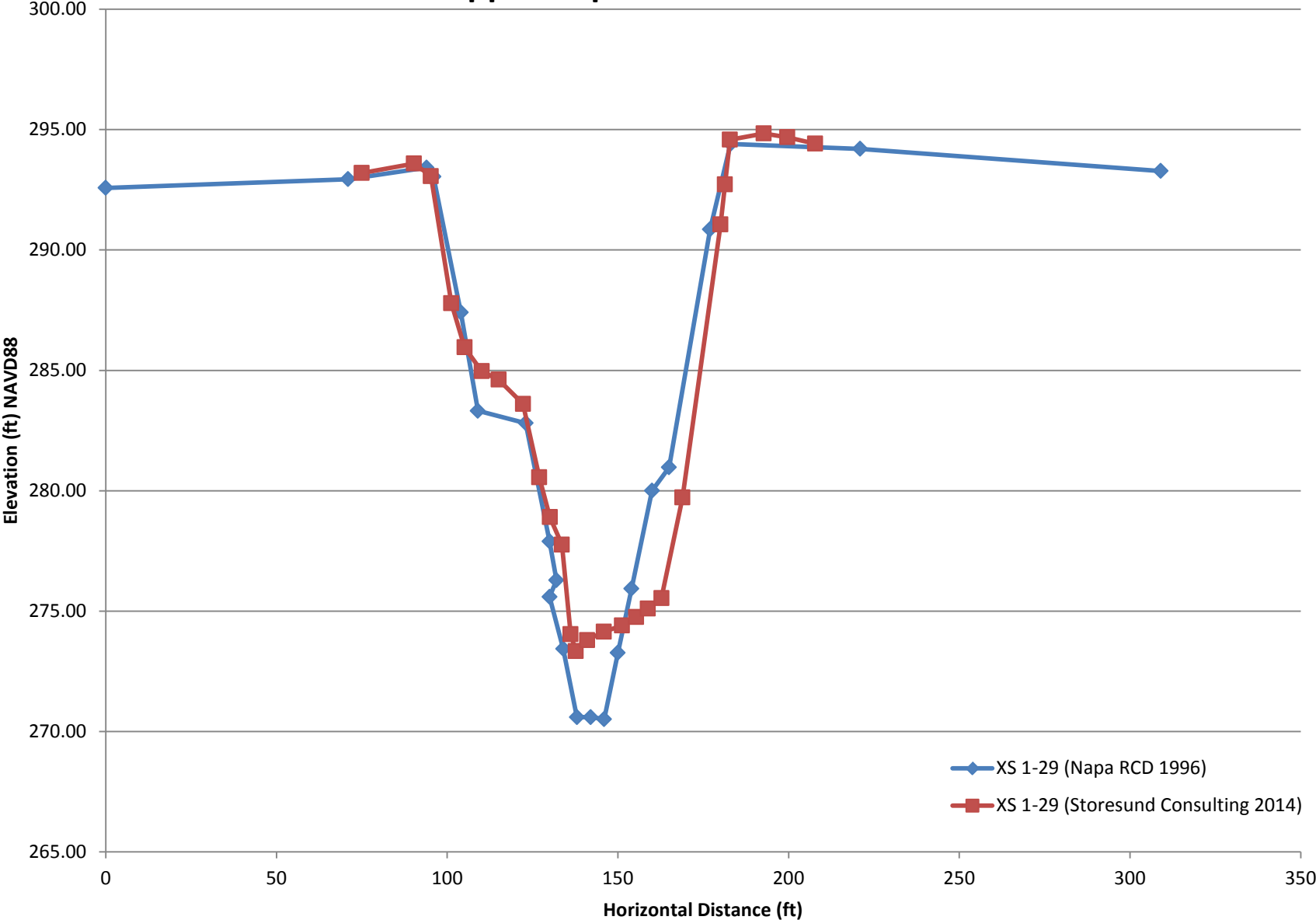
XS 1-28 (Napa RCD 1996)

| Elev | Sta | STA Shift | REF ELEV |
|-------|------|-----------|----------|
| | | 109 | 297 |
| | | ADJ STA | ADJ ELEV |
| 5.93 | 205 | 314 | 291.07 |
| 6.06 | 106 | 215 | 290.94 |
| 20.02 | 84 | 193 | 276.98 |
| 23.40 | 83 | 192 | 273.60 |
| 23.48 | 79 | 188 | 273.52 |
| 25.90 | 75 | 184 | 271.10 |
| 27.40 | 71 | 180 | 269.60 |
| 28.07 | 67 | 176 | 268.93 |
| 26.23 | 63 | 172 | 270.77 |
| 26.98 | 59 | 168 | 270.02 |
| 25.15 | 55 | 164 | 271.85 |
| 23.73 | 51 | 160 | 273.27 |
| 23.20 | 50 | 159 | 273.80 |
| 20.44 | 34 | 143 | 276.56 |
| 13.62 | 34 | 143 | 283.38 |
| 16.72 | 23 | 132 | 280.28 |
| 14.79 | 18 | 127 | 282.21 |
| 11.16 | 14 | 123 | 285.84 |
| 5.47 | 5 | 114 | 291.53 |
| 5.00 | 0 | 109 | 292.00 |
| 6.26 | -25 | 84 | 290.74 |
| 6.61 | -109 | 0 | 290.39 |

XS 1-28 (Storesund Consulting 2014)

| Easting | Northing | Elev | STA Shift | REF ELEV |
|---------|----------|---------|-----------|----------|
| | | | 91 | 0 |
| | | | ADJ STA | ADJ ELEV |
| 6411197 | 1966624 | 290.495 | 91 | 290.495 |
| 6411198 | 1966631 | 291.031 | 97.24384 | 291.031 |
| 6411200 | 1966638 | 291.032 | 105.0773 | 291.032 |
| 6411203 | 1966645 | 291.137 | 112.2665 | 291.137 |
| 6411205 | 1966652 | 291.048 | 120.1049 | 291.048 |
| 6411206 | 1966655 | 288.599 | 122.5849 | 288.599 |
| 6411205 | 1966657 | 287.033 | 124.9156 | 287.033 |
| 6411207 | 1966660 | 285.059 | 127.8079 | 285.059 |
| 6411207 | 1966661 | 282.686 | 129.207 | 282.686 |
| 6411207 | 1966662 | 279.561 | 130.7686 | 279.561 |
| 6411208 | 1966666 | 277.535 | 134.5706 | 277.535 |
| 6411209 | 1966675 | 274.274 | 143.514 | 274.274 |
| 6411209 | 1966679 | 273.297 | 147.985 | 273.297 |
| 6411211 | 1966684 | 272.426 | 153.0813 | 272.426 |
| 6411212 | 1966689 | 272.235 | 157.7839 | 272.235 |
| 6411213 | 1966692 | 272.456 | 161.4753 | 272.456 |
| 6411214 | 1966697 | 272.758 | 165.9081 | 272.758 |
| 6411215 | 1966701 | 273.339 | 170.4336 | 273.339 |
| 6411216 | 1966707 | 273.06 | 176.4901 | 273.06 |
| 6411217 | 1966712 | 273.925 | 181.7205 | 273.925 |
| 6411219 | 1966715 | 275.414 | 184.9838 | 275.414 |
| 6411219 | 1966718 | 277.286 | 188.4393 | 277.286 |
| 6411220 | 1966723 | 279.923 | 193.2105 | 279.923 |
| 6411224 | 1966723 | 280.704 | 196.5939 | 280.704 |
| 6411226 | 1966728 | 282.753 | 202.44 | 282.753 |
| 6411227 | 1966735 | 289.681 | 209.5286 | 289.681 |
| 6411229 | 1966738 | 291.563 | 212.8281 | 291.563 |
| 6411230 | 1966742 | 291.525 | 216.2289 | 291.525 |
| 6411236 | 1966757 | 290.671 | 232.5211 | 290.671 |
| 6411239 | 1966765 | 290.148 | 240.9008 | 290.148 |

Upper Napa River XS 1-29



XS 1-29 (Napa RCD 1996)

STA Shift REF ELEV

94 298.5

| Elev | Sta | ADJ STA | ADJ ELEV |
|-------|-----|---------|----------|
| 5.22 | 215 | 309 | 293.28 |
| 4.30 | 127 | 221 | 294.20 |
| 4.09 | 89 | 183 | 294.41 |
| 7.64 | 83 | 177 | 290.86 |
| 17.53 | 71 | 165 | 280.97 |
| 18.50 | 66 | 160 | 280.00 |
| 22.57 | 60 | 154 | 275.93 |
| 25.24 | 56 | 150 | 273.26 |
| 27.99 | 52 | 146 | 270.51 |
| 27.90 | 48 | 142 | 270.60 |
| 27.90 | 44 | 138 | 270.60 |
| 25.07 | 40 | 134 | 273.43 |
| 22.90 | 36 | 130 | 275.60 |
| 22.22 | 38 | 132 | 276.28 |
| 20.60 | 36 | 130 | 277.90 |
| 15.69 | 29 | 123 | 282.81 |
| 15.18 | 15 | 109 | 283.32 |
| 11.09 | 10 | 104 | 287.41 |
| 5.45 | 2 | 96 | 293.05 |
| 5.08 | 0 | 94 | 293.42 |
| 5.56 | -23 | 71 | 292.94 |
| 5.92 | -94 | 0 | 292.58 |

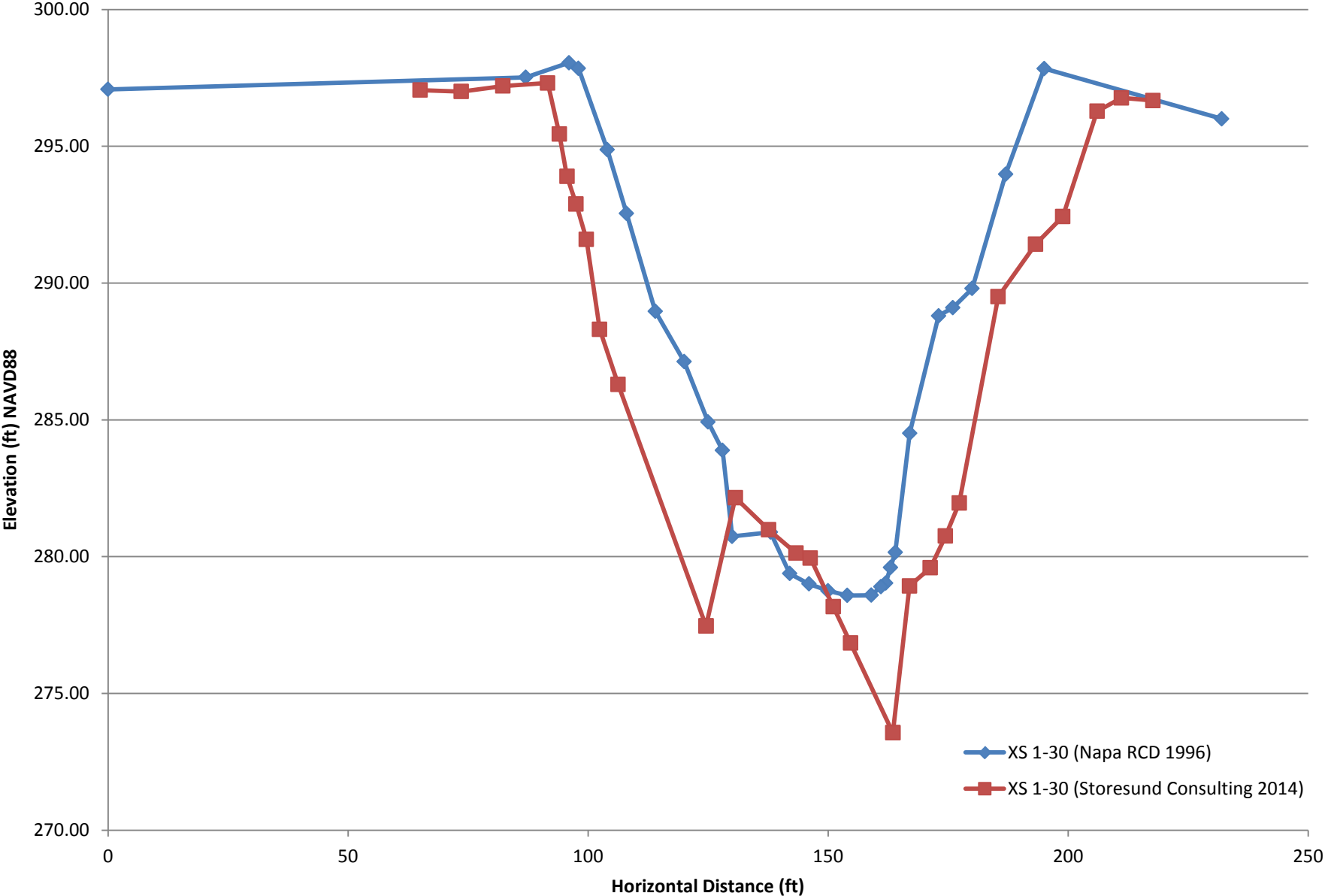
XS 1-29 (Storesund Consulting 2014)

STA Shift REF ELEV

75 0

| Easting | Northing | Elev | ADJ STA | ADJ ELEV |
|---------|----------|---------|----------|----------|
| 6410328 | 1967490 | 293.199 | 75 | 293.199 |
| 6410325 | 1967475 | 293.593 | 90.27906 | 293.593 |
| 6410326 | 1967470 | 293.071 | 95.22533 | 293.071 |
| 6410325 | 1967464 | 287.793 | 101.2154 | 287.793 |
| 6410324 | 1967460 | 285.959 | 105.0973 | 285.959 |
| 6410322 | 1967456 | 284.968 | 110.1081 | 284.968 |
| 6410321 | 1967451 | 284.615 | 115.0625 | 284.615 |
| 6410319 | 1967444 | 283.61 | 122.2046 | 283.61 |
| 6410317 | 1967440 | 280.559 | 126.9675 | 280.559 |
| 6410317 | 1967437 | 278.91 | 130.0816 | 278.91 |
| 6410317 | 1967433 | 277.759 | 133.6166 | 277.759 |
| 6410315 | 1967431 | 274.038 | 136.1358 | 274.038 |
| 6410315 | 1967429 | 273.34 | 137.6808 | 273.34 |
| 6410314 | 1967426 | 273.795 | 140.9868 | 273.795 |
| 6410313 | 1967422 | 274.144 | 145.8613 | 274.144 |
| 6410311 | 1967417 | 274.399 | 151.1853 | 274.399 |
| 6410310 | 1967413 | 274.758 | 155.3352 | 274.758 |
| 6410308 | 1967410 | 275.103 | 158.8084 | 275.103 |
| 6410307 | 1967406 | 275.536 | 162.7562 | 275.536 |
| 6410305 | 1967400 | 279.72 | 168.9134 | 279.72 |
| 6410300 | 1967390 | 291.059 | 180.0776 | 291.059 |
| 6410299 | 1967389 | 292.731 | 181.3661 | 292.731 |
| 6410299 | 1967387 | 294.584 | 182.8208 | 294.584 |
| 6410296 | 1967378 | 294.839 | 192.7432 | 294.839 |
| 6410294 | 1967371 | 294.684 | 199.6058 | 294.684 |
| 6410292 | 1967363 | 294.419 | 207.7658 | 294.419 |

Upper Napa River XS 1-30



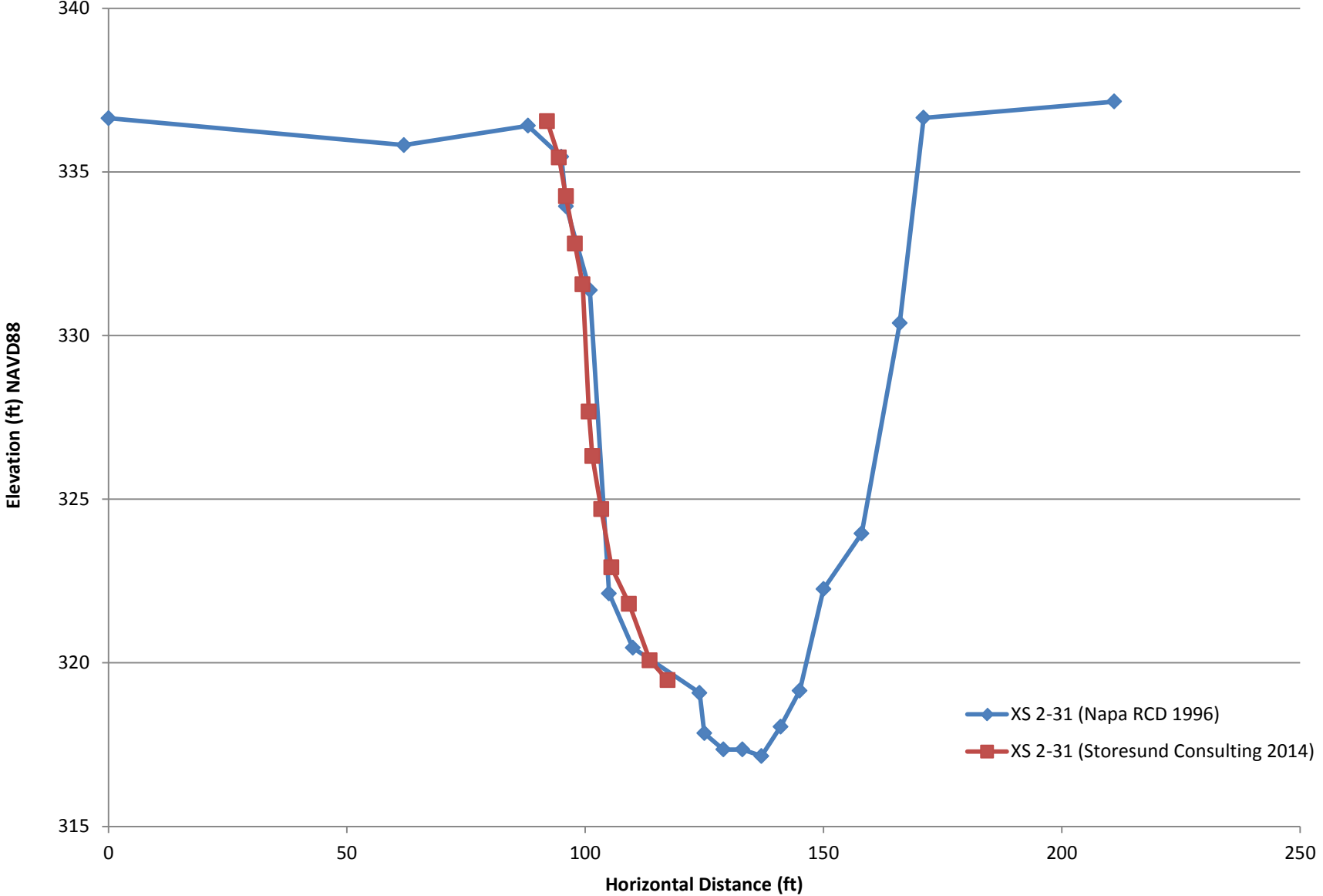
XS 1-30 (Napa RCD 1996)

| | | STA Shift | REF ELEV |
|-------|-----|-----------|----------|
| | | 96 | 303 |
| Elev | Sta | ADJ STA | ADJ ELEV |
| 7.00 | 136 | 232 | 296.00 |
| 5.16 | 99 | 195 | 297.84 |
| 9.02 | 91 | 187 | 293.98 |
| 13.20 | 84 | 180 | 289.80 |
| 13.90 | 80 | 176 | 289.10 |
| 14.20 | 77 | 173 | 288.80 |
| 18.49 | 71 | 167 | 284.51 |
| 22.84 | 68 | 164 | 280.16 |
| 23.40 | 67 | 163 | 279.60 |
| 23.97 | 66 | 162 | 279.03 |
| 24.10 | 65 | 161 | 278.90 |
| 24.41 | 63 | 159 | 278.59 |
| 24.42 | 58 | 154 | 278.58 |
| 24.25 | 54 | 150 | 278.75 |
| 24.00 | 50 | 146 | 279.00 |
| 23.62 | 46 | 142 | 279.38 |
| 22.11 | 42 | 138 | 280.89 |
| 22.26 | 34 | 130 | 280.74 |
| 19.12 | 32 | 128 | 283.88 |
| 18.08 | 29 | 125 | 284.92 |
| 15.87 | 24 | 120 | 287.13 |
| 14.03 | 18 | 114 | 288.97 |
| 10.46 | 12 | 108 | 292.54 |
| 8.13 | 8 | 104 | 294.87 |
| 5.15 | 2 | 98 | 297.85 |
| 4.95 | 0 | 96 | 298.05 |
| 5.48 | -9 | 87 | 297.52 |
| 5.92 | -96 | 0 | 297.08 |

XS 1-30 (Storesund Consulting 2014)

| | | STA Shift | REF ELEV | |
|---------|----------|-----------|----------|----------|
| | | 65 | 0 | |
| Easting | Northing | Elev | ADJ STA | ADJ ELEV |
| 6409327 | 1967579 | 297.051 | 65 | 297.051 |
| 6409324 | 1967587 | 297 | 73.59569 | 297 |
| 6409319 | 1967595 | 297.202 | 82.2692 | 297.202 |
| 6409314 | 1967602 | 297.313 | 91.56657 | 297.313 |
| 6409312 | 1967604 | 295.449 | 94.00099 | 295.449 |
| 6409311 | 1967605 | 293.897 | 95.59896 | 293.897 |
| 6409309 | 1967606 | 292.89 | 97.4949 | 292.89 |
| 6409308 | 1967608 | 291.595 | 99.64604 | 291.595 |
| 6409306 | 1967609 | 288.31 | 102.3899 | 288.31 |
| 6409303 | 1967612 | 286.292 | 106.2564 | 286.292 |
| 6409292 | 1967627 | 277.463 | 124.5671 | 277.463 |
| 6409292 | 1967627 | 277.465 | 124.5693 | 277.465 |
| 6409296 | 1967622 | 282.155 | 130.6804 | 282.155 |
| 6409292 | 1967627 | 280.981 | 137.627 | 280.981 |
| 6409287 | 1967631 | 280.128 | 143.3287 | 280.128 |
| 6409285 | 1967633 | 279.948 | 146.2861 | 279.948 |
| 6409282 | 1967637 | 278.169 | 151.0792 | 278.169 |
| 6409280 | 1967640 | 276.837 | 154.6664 | 276.837 |
| 6409275 | 1967647 | 273.558 | 163.4979 | 273.558 |
| 6409275 | 1967647 | 273.558 | 163.4993 | 273.558 |
| 6409272 | 1967646 | 278.929 | 166.9413 | 278.929 |
| 6409268 | 1967649 | 279.59 | 171.2746 | 279.59 |
| 6409267 | 1967651 | 280.752 | 174.4399 | 280.752 |
| 6409265 | 1967653 | 281.962 | 177.319 | 281.962 |
| 6409259 | 1967658 | 289.498 | 185.4174 | 289.498 |
| 6409253 | 1967664 | 291.417 | 193.2087 | 291.417 |
| 6409251 | 1967669 | 292.432 | 198.8865 | 292.432 |
| 6409249 | 1967676 | 296.278 | 206.0325 | 296.278 |
| 6409247 | 1967681 | 296.766 | 211.1119 | 296.766 |
| 6409243 | 1967686 | 296.67 | 217.6679 | 296.67 |

Upper Napa River XS 2-31



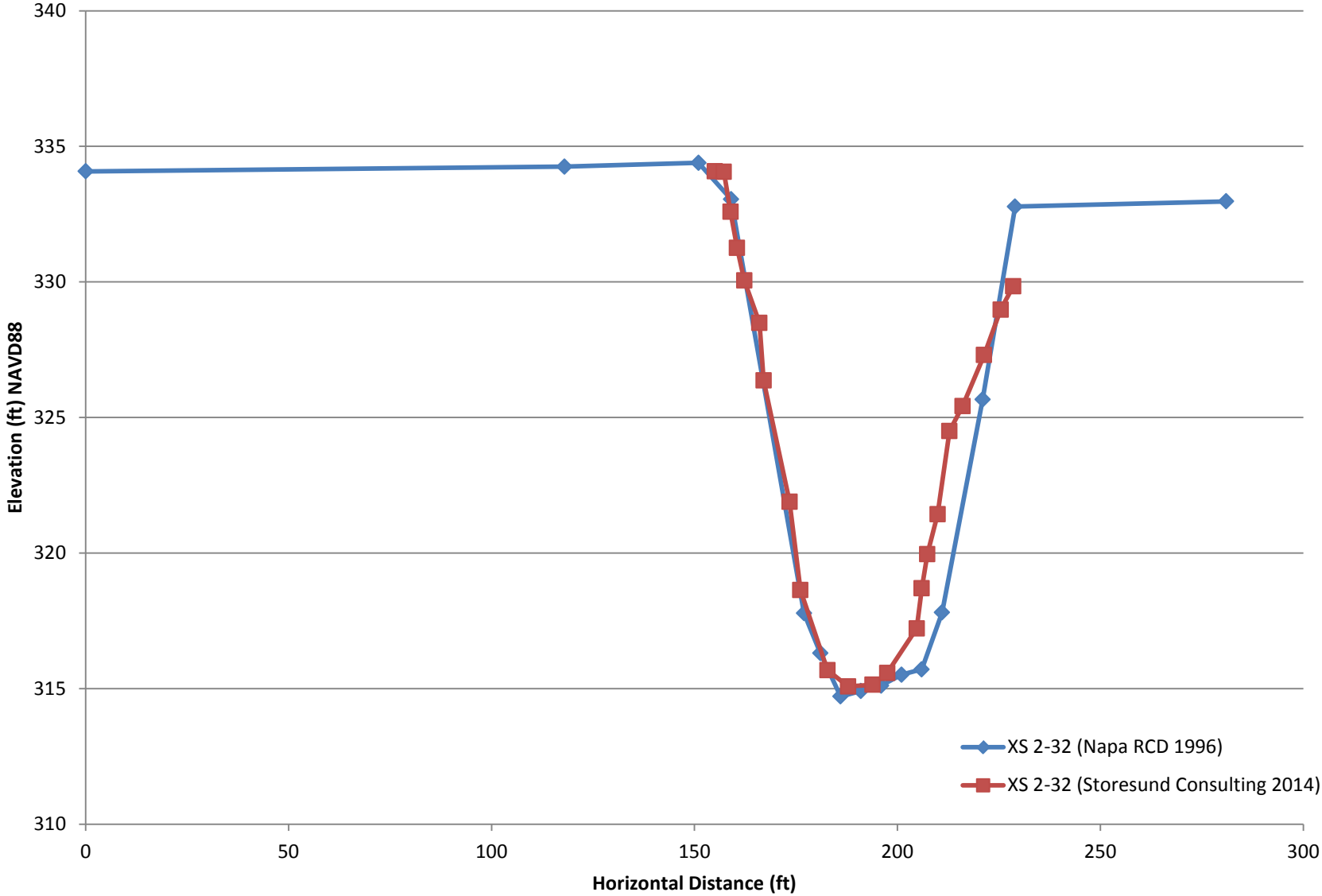
XS 2-31 (Napa RCD 1996)

| | | REF ELEV | STA Shift |
|-------|-----|----------|-----------|
| | | 341 | 88 |
| Elev | Sta | ADJ ELEV | ADJ STA |
| 3.85 | 123 | 337.15 | 211 |
| 4.35 | 83 | 336.65 | 171 |
| 10.62 | 78 | 330.38 | 166 |
| 17.05 | 70 | 323.95 | 158 |
| 18.75 | 62 | 322.25 | 150 |
| 21.85 | 57 | 319.15 | 145 |
| 22.95 | 53 | 318.05 | 141 |
| 23.85 | 49 | 317.15 | 137 |
| 23.65 | 45 | 317.35 | 133 |
| 23.65 | 41 | 317.35 | 129 |
| 23.15 | 37 | 317.85 | 125 |
| 21.92 | 36 | 319.08 | 124 |
| 20.54 | 22 | 320.46 | 110 |
| 18.88 | 17 | 322.12 | 105 |
| 9.62 | 13 | 331.38 | 101 |
| 7.05 | 8 | 333.95 | 96 |
| 5.54 | 7 | 335.46 | 95 |
| 4.59 | 0 | 336.41 | 88 |
| 5.18 | -26 | 335.82 | 62 |
| 4.36 | -88 | 336.64 | 0 |

XS 2-31 (Storesund Consulting 2014)

| | | STA Shift | REF ELEV | |
|---------|----------|-----------|----------|----------|
| | | 92 | 0 | |
| Easting | Northing | Elev | ADJ STA | ADJ ELEV |
| 6398614 | 1971386 | 336.544 | 92 | 336.544 |
| 6398613 | 1971383 | 335.441 | 94.4834 | 335.441 |
| 6398612 | 1971382 | 334.254 | 95.95821 | 334.254 |
| 6398611 | 1971381 | 332.808 | 97.83598 | 332.808 |
| 6398610 | 1971379 | 331.564 | 99.45592 | 331.564 |
| 6398609 | 1971378 | 327.671 | 100.7615 | 327.671 |
| 6398609 | 1971378 | 326.316 | 101.5069 | 326.316 |
| 6398608 | 1971376 | 324.699 | 103.3653 | 324.699 |
| 6398606 | 1971375 | 322.917 | 105.5292 | 322.917 |
| 6398605 | 1971371 | 321.803 | 109.1922 | 321.803 |
| 6398602 | 1971368 | 320.078 | 113.5369 | 320.078 |
| 6398599 | 1971365 | 319.47 | 117.3135 | 319.47 |

Upper Napa River XS 2-32



XS 2-32 (Napa RCD 1996)

STA Shift REF ELEV

151 339

| Elev | Sta | ADJ STA | ADJ ELEV |
|-------|------|---------|----------|
| 6.03 | 130 | 281 | 332.97 |
| 6.22 | 78 | 229 | 332.78 |
| 13.34 | 70 | 221 | 325.66 |
| 21.19 | 60 | 211 | 317.81 |
| 23.29 | 55 | 206 | 315.71 |
| 23.49 | 50 | 201 | 315.51 |
| 23.89 | 45 | 196 | 315.11 |
| 24.09 | 40 | 191 | 314.91 |
| 24.29 | 35 | 186 | 314.71 |
| 22.69 | 30 | 181 | 316.31 |
| 21.22 | 26 | 177 | 317.78 |
| 5.95 | 8 | 159 | 333.05 |
| 4.61 | 0 | 151 | 334.39 |
| 4.75 | -33 | 118 | 334.25 |
| 4.92 | -151 | 0 | 334.08 |

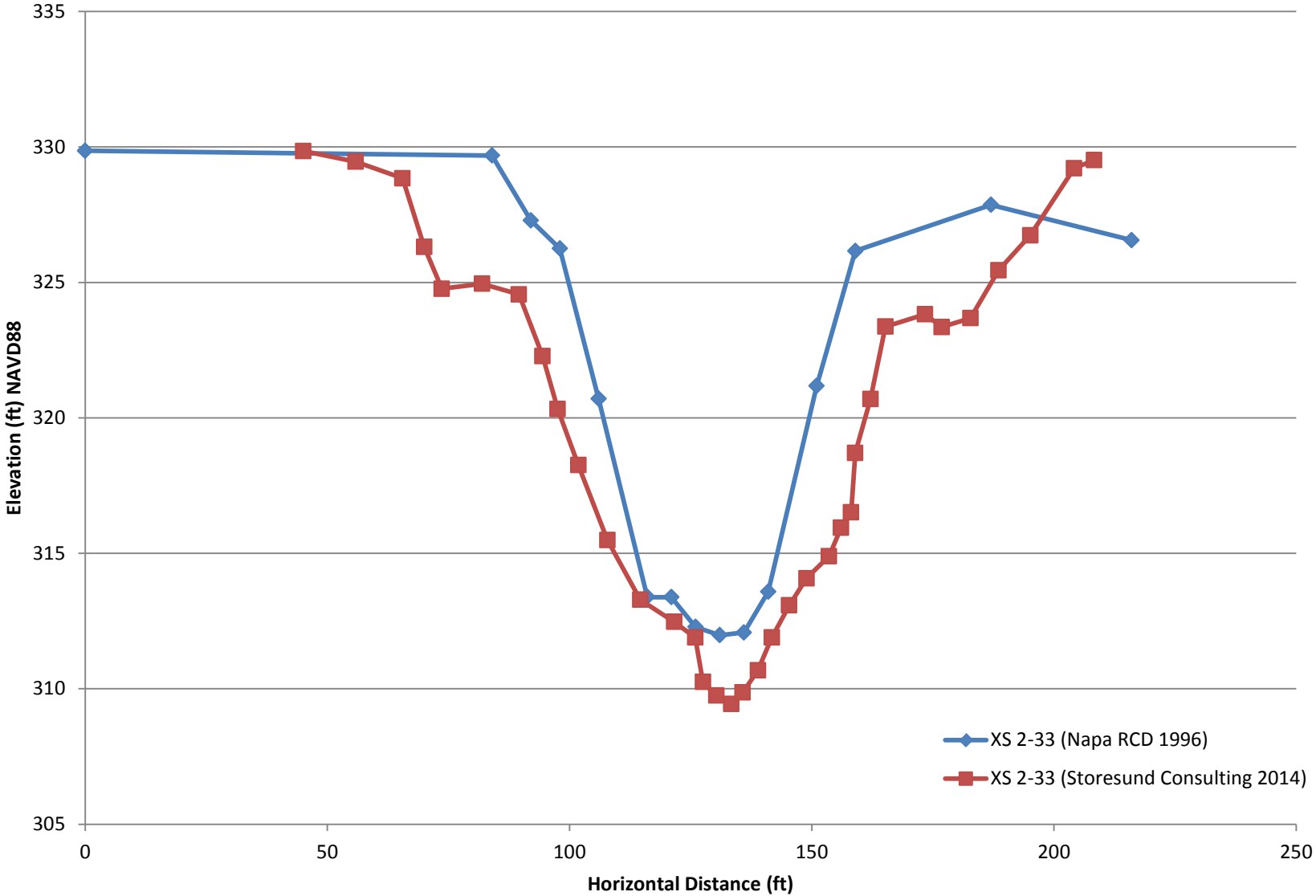
XS 2-32 (Storesund Consulting 2014)

STA Shift REF ELEV

155 0

| Easting | Northing | Elev | ADJ STA | ADJ ELEV |
|---------|----------|---------|----------|----------|
| 6399389 | 1971144 | 334.077 | 155 | 334.077 |
| 6399388 | 1971142 | 334.059 | 157.2263 | 334.059 |
| 6399388 | 1971141 | 332.586 | 158.899 | 332.586 |
| 6399387 | 1971139 | 331.26 | 160.5004 | 331.26 |
| 6399387 | 1971137 | 330.057 | 162.2628 | 330.057 |
| 6399387 | 1971134 | 328.485 | 166.0016 | 328.485 |
| 6399386 | 1971133 | 326.371 | 167.046 | 326.371 |
| 6399381 | 1971129 | 321.895 | 173.4432 | 321.895 |
| 6399381 | 1971126 | 318.631 | 176.0962 | 318.631 |
| 6399378 | 1971120 | 315.68 | 182.7523 | 315.68 |
| 6399375 | 1971116 | 315.08 | 187.8348 | 315.08 |
| 6399372 | 1971110 | 315.14 | 193.886 | 315.14 |
| 6399371 | 1971107 | 315.576 | 197.4973 | 315.576 |
| 6399374 | 1971101 | 317.22 | 204.7594 | 317.22 |
| 6399374 | 1971100 | 318.696 | 205.9995 | 318.696 |
| 6399373 | 1971099 | 319.959 | 207.3759 | 319.959 |
| 6399371 | 1971097 | 321.428 | 209.8923 | 321.428 |
| 6399368 | 1971095 | 324.503 | 212.8052 | 324.503 |
| 6399365 | 1971095 | 325.417 | 216.0327 | 325.417 |
| 6399361 | 1971091 | 327.302 | 221.3504 | 327.302 |
| 6399358 | 1971088 | 328.976 | 225.4586 | 328.976 |
| 6399358 | 1971085 | 329.835 | 228.5314 | 329.835 |

Upper Napa River XS 2-33



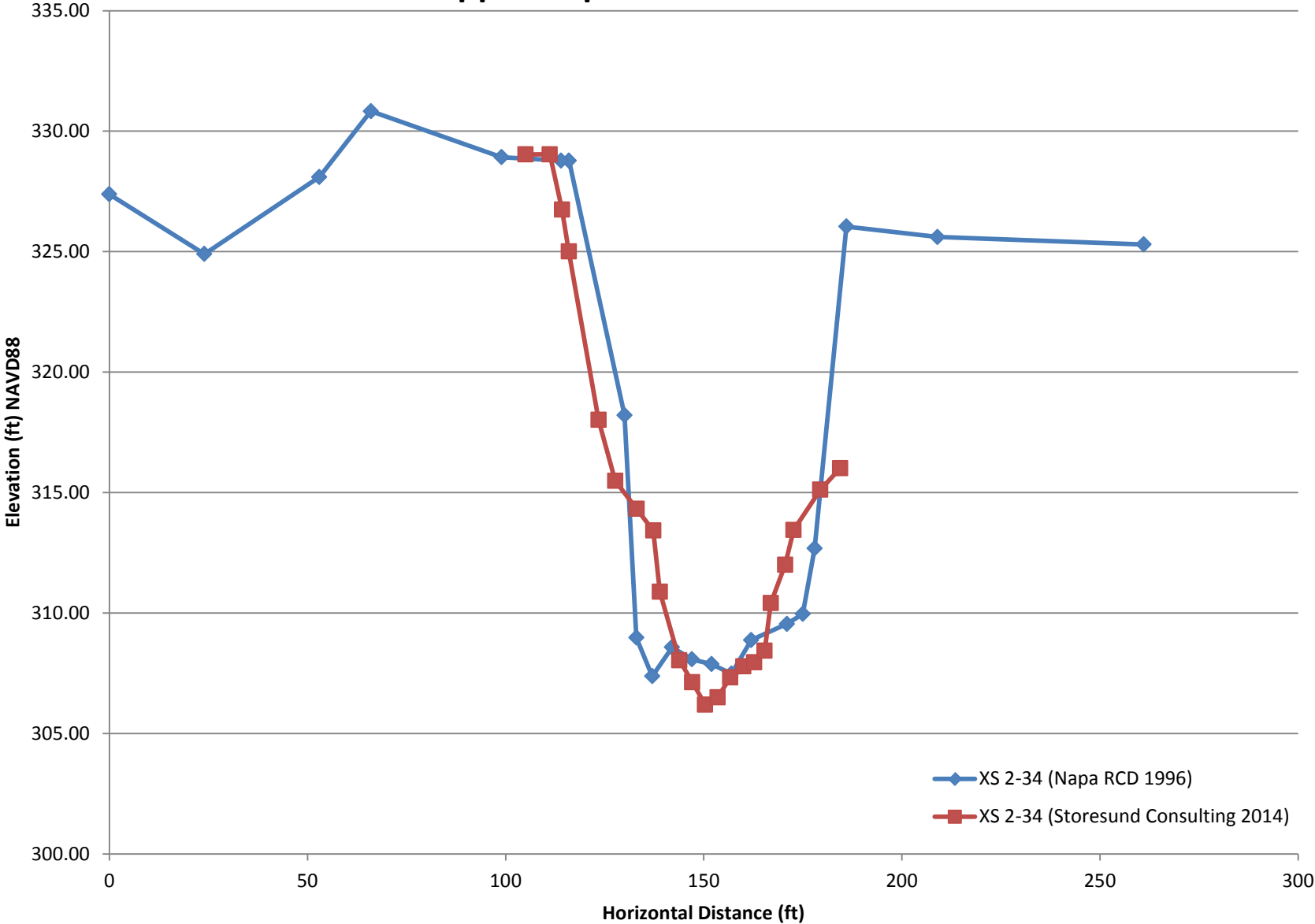
XS 2-33 (Napa RCD 1996)

| | | STA Shift | REF ELEV | | |
|-------|-----|-----------|----------|--|--|
| | | 92 | 332 | | |
| Elev | Sta | ADJ STA | ADJ ELEV | | |
| 5.44 | 124 | 216 | 326.56 | | |
| 4.14 | 95 | 187 | 327.86 | | |
| 5.84 | 67 | 159 | 326.16 | | |
| 10.82 | 59 | 151 | 321.18 | | |
| 18.42 | 49 | 141 | 313.58 | | |
| 19.92 | 44 | 136 | 312.08 | | |
| 20.02 | 39 | 131 | 311.98 | | |
| 19.72 | 34 | 126 | 312.28 | | |
| 18.62 | 29 | 121 | 313.38 | | |
| 18.62 | 24 | 116 | 313.38 | | |
| 18.6 | 24 | 116 | 313.4 | | |
| 11.3 | 14 | 106 | 320.7 | | |
| 5.75 | 6 | 98 | 326.25 | | |
| 4.71 | 0 | 92 | 327.29 | | |
| 2.32 | -8 | 84 | 329.68 | | |
| 2.14 | -92 | 0 | 329.86 | | |

XS 2-33 (Storesund Consulting 2014)

| | | | STA Shift | REF ELEV | | |
|---------|----------|---------|-----------|----------|--|--|
| | | | 45 | 0 | | |
| Easting | Northing | Elev | ADJ STA | ADJ ELEV | | |
| 6400547 | 1970904 | 329.849 | 45 | 329.849 | | |
| 6400548 | 1970893 | 329.454 | 55.86354 | 329.454 | | |
| 6400548 | 1970883 | 328.841 | 65.5059 | 328.841 | | |
| 6400547 | 1970879 | 326.311 | 69.9815 | 326.311 | | |
| 6400547 | 1970875 | 324.766 | 73.63031 | 324.766 | | |
| 6400546 | 1970867 | 324.95 | 81.9217 | 324.95 | | |
| 6400546 | 1970859 | 324.556 | 89.52503 | 324.556 | | |
| 6400547 | 1970855 | 322.281 | 94.42075 | 322.281 | | |
| 6400546 | 1970851 | 320.325 | 97.53459 | 320.325 | | |
| 6400545 | 1970847 | 318.254 | 101.7991 | 318.254 | | |
| 6400545 | 1970841 | 315.491 | 107.8149 | 315.491 | | |
| 6400545 | 1970835 | 313.289 | 114.6019 | 313.289 | | |
| 6400547 | 1970828 | 312.471 | 121.5854 | 312.471 | | |
| 6400547 | 1970824 | 311.892 | 125.9482 | 311.892 | | |
| 6400547 | 1970822 | 310.252 | 127.535 | 310.252 | | |
| 6400547 | 1970819 | 309.753 | 130.3305 | 309.753 | | |
| 6400547 | 1970816 | 309.441 | 133.3963 | 309.441 | | |
| 6400547 | 1970814 | 309.866 | 135.7414 | 309.866 | | |
| 6400548 | 1970811 | 310.682 | 138.8828 | 310.682 | | |
| 6400548 | 1970808 | 311.894 | 141.7424 | 311.894 | | |
| 6400549 | 1970804 | 313.079 | 145.3214 | 313.079 | | |
| 6400550 | 1970801 | 314.079 | 148.9097 | 314.079 | | |
| 6400551 | 1970796 | 314.895 | 153.5573 | 314.895 | | |
| 6400552 | 1970794 | 315.945 | 156.0438 | 315.945 | | |
| 6400552 | 1970792 | 316.513 | 158.1144 | 316.513 | | |
| 6400552 | 1970791 | 318.704 | 158.9661 | 318.704 | | |
| 6400553 | 1970788 | 320.692 | 162.108 | 320.692 | | |
| 6400555 | 1970786 | 323.369 | 165.1835 | 323.369 | | |
| 6400556 | 1970778 | 323.822 | 173.3563 | 323.822 | | |
| 6400557 | 1970774 | 323.352 | 176.8354 | 323.352 | | |
| 6400558 | 1970768 | 323.679 | 182.7477 | 323.679 | | |
| 6400558 | 1970763 | 325.45 | 188.5636 | 325.45 | | |
| 6400559 | 1970756 | 326.74 | 195.1029 | 326.74 | | |
| 6400560 | 1970747 | 329.214 | 204.147 | 329.214 | | |
| 6400560 | 1970743 | 329.512 | 208.274 | 329.512 | | |

Upper Napa River XS 2-34



XS 2-34 (Napa RCD 1996)

STA Shift REF ELEV

114 333

| Elev | Sta | ADJ STA | ADJ ELEV |
|-------|------|---------|----------|
| 7.70 | 147 | 261 | 325.30 |
| 7.39 | 95 | 209 | 325.61 |
| 6.96 | 72 | 186 | 326.04 |
| 20.32 | 64 | 178 | 312.68 |
| 23.04 | 61 | 175 | 309.96 |
| 23.45 | 57 | 171 | 309.55 |
| 24.12 | 48 | 162 | 308.88 |
| 25.52 | 43 | 157 | 307.48 |
| 25.12 | 38 | 152 | 307.88 |
| 24.92 | 33 | 147 | 308.08 |
| 24.42 | 28 | 142 | 308.58 |
| 25.62 | 23 | 137 | 307.38 |
| 24.02 | 19 | 133 | 308.98 |
| 14.79 | 16 | 130 | 318.21 |
| 4.22 | 2 | 116 | 328.78 |
| 4.22 | 0 | 114 | 328.78 |
| 4.08 | -15 | 99 | 328.92 |
| 2.17 | -48 | 66 | 330.83 |
| 4.9 | -61 | 53 | 328.10 |
| 8.1 | -90 | 24 | 324.90 |
| 5.62 | -114 | 0 | 327.38 |

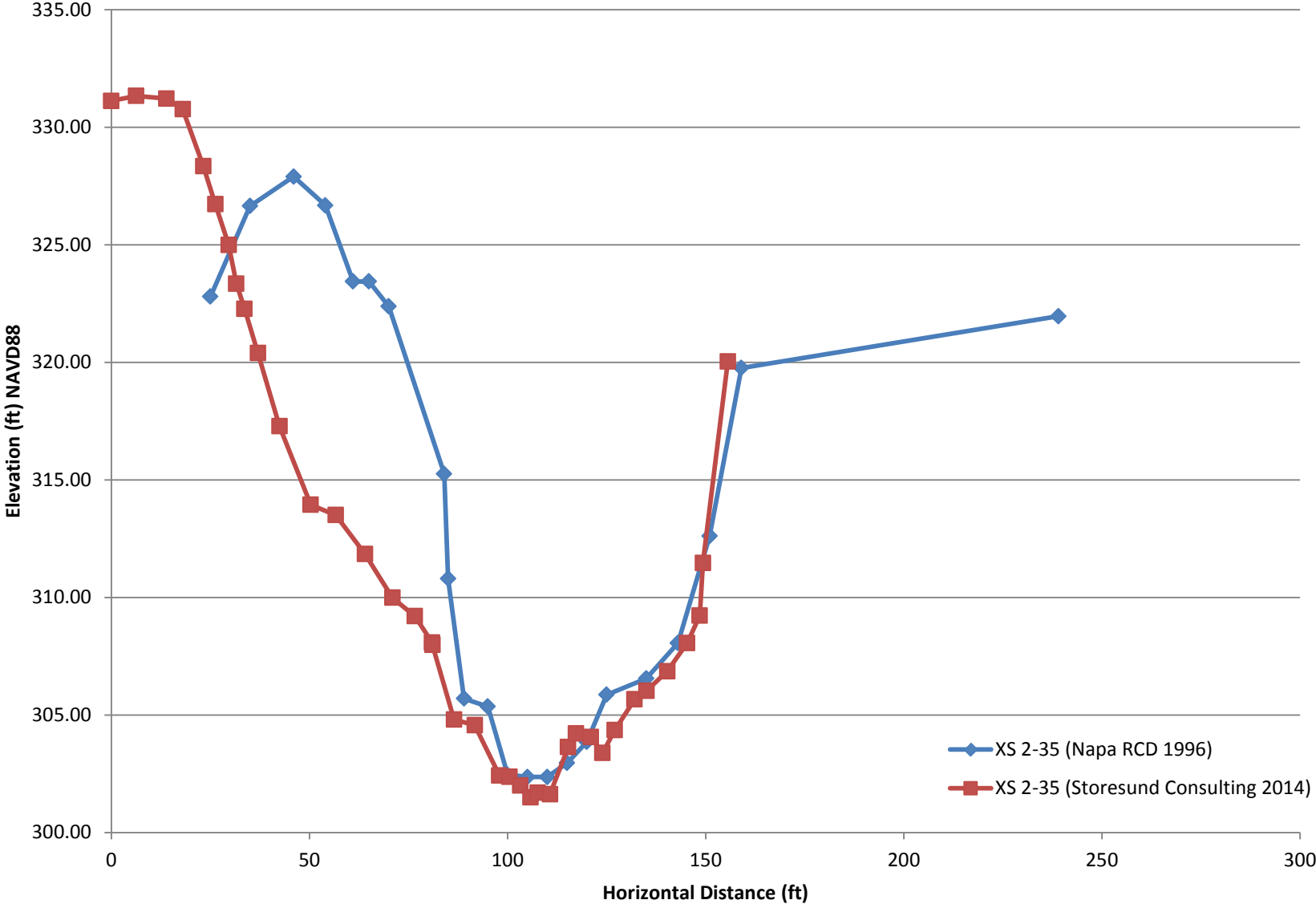
XS 2-34 (Storesund Consulting 2014)

STA Shift REF ELEV

105 0

| Easting | Northing | Elev | ADJ STA | ADJ ELEV |
|---------|----------|---------|----------|----------|
| 6401610 | 1970650 | 329.036 | 105 | 329.036 |
| 6401606 | 1970645 | 329.041 | 111.1656 | 329.041 |
| 6401604 | 1970643 | 326.748 | 114.2324 | 326.748 |
| 6401602 | 1970642 | 325.005 | 115.9588 | 325.005 |
| 6401596 | 1970638 | 318.017 | 123.4726 | 318.017 |
| 6401593 | 1970635 | 315.491 | 127.6495 | 315.491 |
| 6401589 | 1970631 | 314.323 | 133.0794 | 314.323 |
| 6401586 | 1970629 | 313.425 | 137.2677 | 313.425 |
| 6401584 | 1970628 | 310.89 | 138.9313 | 310.89 |
| 6401581 | 1970624 | 308.039 | 143.8479 | 308.039 |
| 6401578 | 1970622 | 307.134 | 147.1034 | 307.134 |
| 6401576 | 1970620 | 306.196 | 150.3497 | 306.196 |
| 6401573 | 1970619 | 306.505 | 153.5327 | 306.505 |
| 6401570 | 1970617 | 307.323 | 156.681 | 307.323 |
| 6401568 | 1970615 | 307.786 | 160.0156 | 307.786 |
| 6401565 | 1970614 | 307.956 | 162.7492 | 307.956 |
| 6401563 | 1970612 | 308.435 | 165.3527 | 308.435 |
| 6401562 | 1970612 | 310.411 | 166.9122 | 310.411 |
| 6401558 | 1970610 | 312 | 170.5424 | 312 |
| 6401557 | 1970609 | 313.453 | 172.6767 | 313.453 |
| 6401552 | 1970604 | 315.122 | 179.4135 | 315.122 |
| 6401549 | 1970600 | 316.012 | 184.4323 | 316.012 |

Upper Napa River XS 2-35



XS 2-35 (Napa RCD 1996)

STA Shift REF ELEV

65 328

| Elev | Sta | ADJ STA | ADJ ELEV |
|-------|-----|---------|----------|
| 6.04 | 174 | 239 | 321.96 |
| 8.24 | 94 | 159 | 319.76 |
| 15.39 | 86 | 151 | 312.61 |
| 19.94 | 78 | 143 | 308.06 |
| 21.45 | 70 | 135 | 306.55 |
| 22.14 | 60 | 125 | 305.86 |
| 24.14 | 55 | 120 | 303.86 |
| 25.04 | 50 | 115 | 302.96 |
| 25.64 | 45 | 110 | 302.36 |
| 25.64 | 40 | 105 | 302.36 |
| 25.54 | 35 | 100 | 302.46 |
| 22.64 | 30 | 95 | 305.36 |
| 22.30 | 24 | 89 | 305.70 |
| 17.20 | 20 | 85 | 310.80 |
| 12.74 | 19 | 84 | 315.26 |
| 5.62 | 5 | 70 | 322.38 |
| 4.56 | 0 | 65 | 323.44 |
| 4.56 | -4 | 61 | 323.44 |
| 1.32 | -11 | 54 | 326.68 |
| 0.10 | -19 | 46 | 327.90 |
| 1.35 | -30 | 35 | 326.65 |
| 5.20 | -40 | 25 | 322.80 |

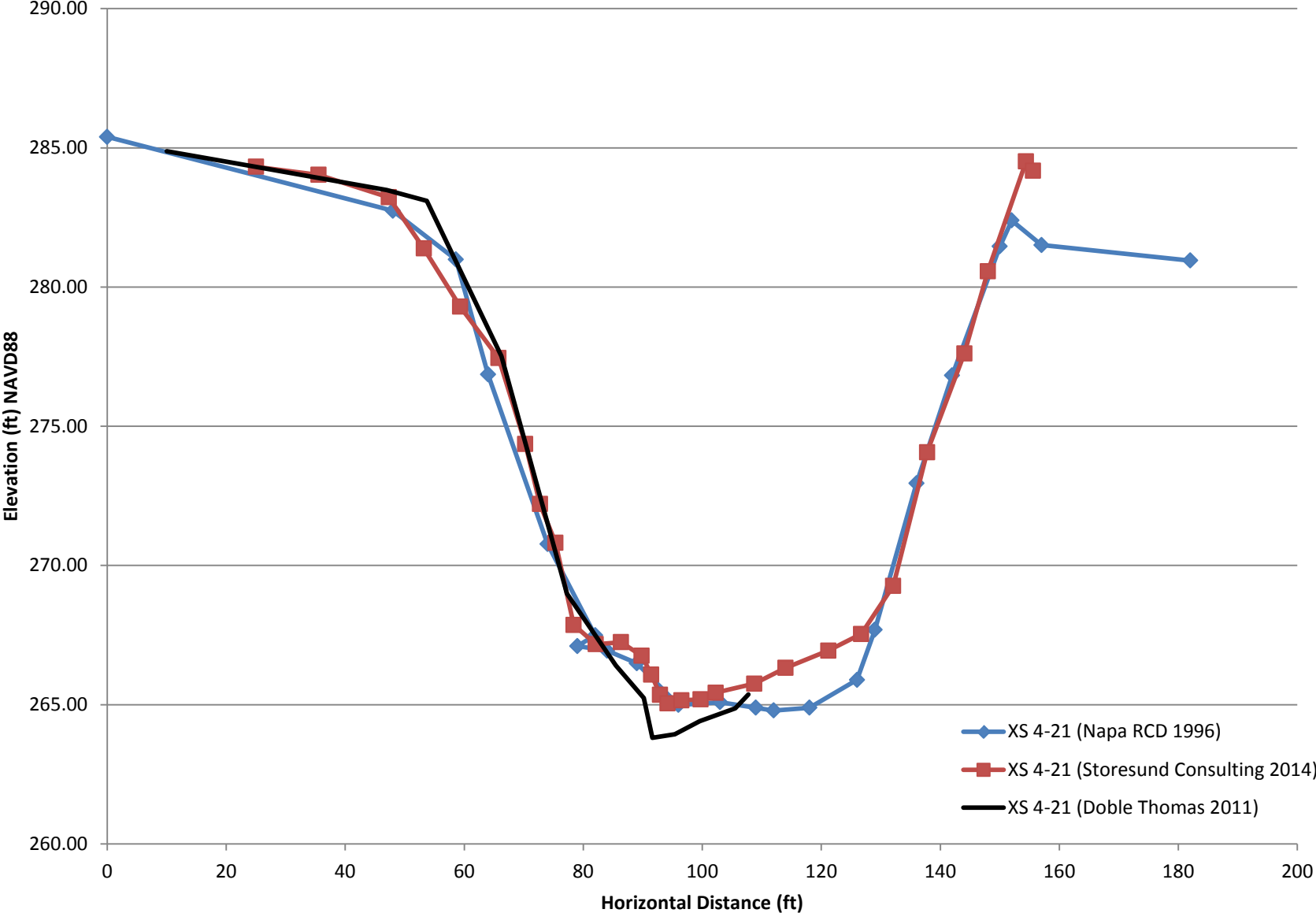
XS 2-35 (Storesund Consulting 2014)

STA Shift REF ELEV

0 0

| Easting | Northing | Elev | ADJ STA | ADJ ELEV |
|---------|----------|---------|----------|----------|
| 6402400 | 1969688 | 331.121 | 0 | 331.121 |
| 6402399 | 1969682 | 331.336 | 6.260679 | 331.336 |
| 6402396 | 1969675 | 331.221 | 13.88806 | 331.221 |
| 6402393 | 1969672 | 330.769 | 18.01446 | 330.769 |
| 6402390 | 1969668 | 328.352 | 23.19533 | 328.352 |
| 6402389 | 1969665 | 326.728 | 26.26098 | 326.728 |
| 6402387 | 1969662 | 324.997 | 29.61939 | 324.997 |
| 6402386 | 1969661 | 323.348 | 31.53764 | 323.348 |
| 6402385 | 1969659 | 322.277 | 33.60173 | 322.277 |
| 6402383 | 1969656 | 320.393 | 36.99422 | 320.393 |
| 6402381 | 1969651 | 317.281 | 42.43998 | 317.281 |
| 6402380 | 1969643 | 313.941 | 50.3073 | 313.941 |
| 6402378 | 1969637 | 313.506 | 56.61984 | 313.506 |
| 6402376 | 1969630 | 311.852 | 64.00636 | 311.852 |
| 6402374 | 1969623 | 309.99 | 70.95233 | 309.99 |
| 6402374 | 1969618 | 309.203 | 76.59274 | 309.203 |
| 6402375 | 1969613 | 308.081 | 80.96189 | 308.081 |
| 6402375 | 1969613 | 307.981 | 81.04377 | 307.981 |
| 6402373 | 1969608 | 304.811 | 86.48619 | 304.811 |
| 6402372 | 1969603 | 304.56 | 91.72462 | 304.56 |
| 6402371 | 1969597 | 302.426 | 97.91684 | 302.426 |
| 6402371 | 1969594 | 302.37 | 100.4725 | 302.37 |
| 6402371 | 1969592 | 301.997 | 103.2235 | 301.997 |
| 6402371 | 1969589 | 301.498 | 105.7765 | 301.498 |
| 6402371 | 1969587 | 301.694 | 107.6078 | 301.694 |
| 6402369 | 1969585 | 301.629 | 110.6995 | 301.629 |
| 6402365 | 1969582 | 303.634 | 115.2866 | 303.634 |
| 6402366 | 1969580 | 304.211 | 117.2501 | 304.211 |
| 6402365 | 1969576 | 304.059 | 121.0266 | 304.059 |
| 6402363 | 1969574 | 303.385 | 123.9631 | 303.385 |
| 6402362 | 1969571 | 304.362 | 127.0682 | 304.362 |
| 6402360 | 1969566 | 305.663 | 132.0502 | 305.663 |
| 6402359 | 1969564 | 306.032 | 135.0953 | 306.032 |
| 6402358 | 1969559 | 306.859 | 140.2876 | 306.859 |
| 6402354 | 1969555 | 308.062 | 145.3147 | 308.062 |
| 6402352 | 1969553 | 309.228 | 148.4867 | 309.228 |
| 6402351 | 1969552 | 311.468 | 149.2934 | 311.468 |
| 6402350 | 1969546 | 320.039 | 155.5989 | 320.039 |

Upper Napa River XS 4-21



XS 4-21 (Napa RCD 1996)

| | | STA Shift | REF ELEV |
|----------|-----|-----------|----------|
| | | 54 | 286 |
| Elev | Sta | ADJ STA | ADJ ELEV |
| 5.05 | 128 | 182 | 280.95 |
| 4.49 | 103 | 157 | 281.51 |
| 3.61 | 98 | 152 | 282.39 |
| 4.54 | 96 | 150 | 281.46 |
| 9.17 | 88 | 142 | 276.83 |
| 13.05 | 82 | 136 | 272.95 |
| 18.31 | 75 | 129 | 267.69 |
| 20.11 | 72 | 126 | 265.89 |
| 21.11 | 64 | 118 | 264.89 |
| 21.21 | 58 | 112 | 264.79 |
| 21.11 | 55 | 109 | 264.89 |
| 20.91 | 49 | 103 | 265.09 |
| 21.01 | 42 | 96 | 264.99 |
| 19.51 | 35 | 89 | 266.49 |
| 19.06 | 30 | 84 | 266.94 |
| 18.89333 | 25 | 79 | 267.11 |
| 18.51 | 28 | 82 | 267.49 |
| 15.23 | 20 | 74 | 270.77 |
| 9.14 | 10 | 64 | 276.86 |
| 5.01 | 4.6 | 58.6 | 280.99 |
| 3.26 | -6 | 48 | 282.74 |
| 0.61 | -54 | 0 | 285.39 |

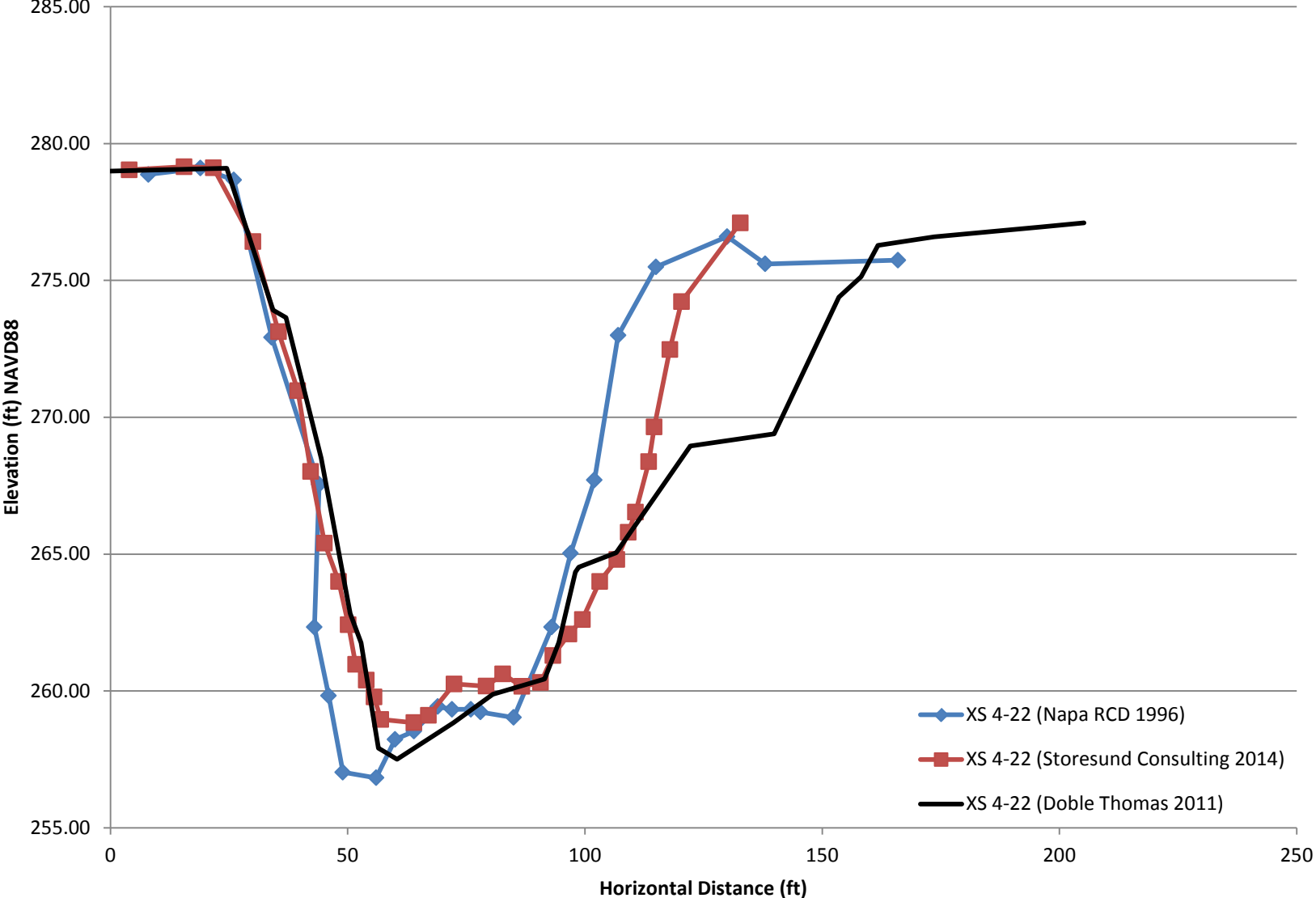
XS 4-21 (Doble Thomas 2011)

| | | STA Shift | REF ELEV |
|----------|---------|-----------|----------|
| | | 10 | 0 |
| STA | ELEV | ADJ STA | ADJ ELEV |
| 0 | 284.875 | 10 | 284.875 |
| 15.45452 | 284.299 | 25.45452 | 284.299 |
| 15.45452 | 284.299 | 25.45452 | 284.299 |
| 36.96149 | 283.486 | 46.96149 | 283.486 |
| 36.96149 | 283.486 | 46.96149 | 283.486 |
| 43.70112 | 283.094 | 53.70112 | 283.094 |
| 56.23716 | 277.514 | 66.23716 | 277.514 |
| 67.25485 | 268.989 | 77.25485 | 268.989 |
| 75.447 | 266.414 | 85.447 | 266.414 |
| 80.16539 | 265.239 | 90.16539 | 265.239 |
| 81.5883 | 263.815 | 91.5883 | 263.815 |
| 85.36733 | 263.936 | 95.36733 | 263.936 |
| 89.55814 | 264.412 | 99.55814 | 264.412 |
| 95.55904 | 264.873 | 105.559 | 264.873 |
| 97.73897 | 265.367 | 107.739 | 265.367 |

XS 4-21 (Storesund Consulting 2014)

| | | | STA Shift | REF ELEV |
|---------|----------|---------|-----------|----------|
| | | | 25 | 0 |
| Easting | Northing | Elev | ADJ STA | ADJ ELEV |
| 6413792 | 1966301 | 284.319 | 25 | 284.319 |
| 6413792 | 1966290 | 284.03 | 35.51831 | 284.03 |
| 6413792 | 1966278 | 283.224 | 47.31016 | 283.224 |
| 6413791 | 1966272 | 281.385 | 53.21665 | 281.385 |
| 6413791 | 1966266 | 279.301 | 59.29681 | 279.301 |
| 6413791 | 1966260 | 277.448 | 65.77161 | 277.448 |
| 6413790 | 1966256 | 274.364 | 70.25124 | 274.364 |
| 6413789 | 1966253 | 272.208 | 72.7332 | 272.208 |
| 6413789 | 1966251 | 270.814 | 75.33056 | 270.814 |
| 6413789 | 1966248 | 267.863 | 78.38356 | 267.863 |
| 6413789 | 1966244 | 267.172 | 82.10734 | 267.172 |
| 6413788 | 1966240 | 267.244 | 86.35425 | 267.244 |
| 6413788 | 1966236 | 266.755 | 89.82492 | 266.755 |
| 6413788 | 1966235 | 266.08 | 91.42088 | 266.08 |
| 6413788 | 1966233 | 265.351 | 92.90003 | 265.351 |
| 6413788 | 1966232 | 265.047 | 94.17835 | 265.047 |
| 6413788 | 1966229 | 265.156 | 96.48535 | 265.156 |
| 6413789 | 1966226 | 265.192 | 99.70289 | 265.192 |
| 6413789 | 1966224 | 265.43 | 102.2517 | 265.43 |
| 6413789 | 1966217 | 265.755 | 108.7518 | 265.755 |
| 6413789 | 1966212 | 266.322 | 113.9845 | 266.322 |
| 6413787 | 1966205 | 266.942 | 121.1763 | 266.942 |
| 6413788 | 1966200 | 267.539 | 126.7152 | 267.539 |
| 6413789 | 1966195 | 269.269 | 132.0845 | 269.269 |
| 6413791 | 1966189 | 274.067 | 137.7813 | 274.067 |
| 6413793 | 1966183 | 277.617 | 144.041 | 277.617 |
| 6413793 | 1966179 | 280.564 | 147.9869 | 280.564 |
| 6413794 | 1966173 | 284.515 | 154.4012 | 284.515 |
| 6413795 | 1966172 | 284.175 | 155.5885 | 284.175 |

Upper Napa River XS 4-22



XS 4-22 (Napa RCD 1996)

| | | STA Shift | REF ELEV |
|-------|-----|-----------|----------|
| | | 22 | 283.5 |
| Elev | Sta | ADJ STA | ADJ ELEV |
| 7.76 | 144 | 166 | 275.74 |
| 7.90 | 116 | 138 | 275.60 |
| 6.90 | 108 | 130 | 276.60 |
| 8.01 | 93 | 115 | 275.49 |
| 10.51 | 85 | 107 | 272.99 |
| 15.79 | 80 | 102 | 267.71 |
| 18.47 | 75 | 97 | 265.03 |
| 21.17 | 71 | 93 | 262.33 |
| 24.47 | 63 | 85 | 259.03 |
| 24.27 | 56 | 78 | 259.23 |
| 24.17 | 54 | 76 | 259.33 |
| 24.17 | 50 | 72 | 259.33 |
| 24.07 | 47 | 69 | 259.43 |
| 24.97 | 42 | 64 | 258.53 |
| 25.27 | 38 | 60 | 258.23 |
| 26.67 | 34 | 56 | 256.83 |
| 26.47 | 27 | 49 | 257.03 |
| 23.67 | 24 | 46 | 259.83 |
| 21.17 | 21 | 43 | 262.33 |
| 15.95 | 22 | 44 | 267.55 |
| 10.58 | 12 | 34 | 272.92 |
| 4.83 | 4 | 26 | 278.67 |
| 4.40 | -3 | 19 | 279.10 |
| 4.63 | -14 | 8 | 278.87 |

XS 4-22 (Doble Thomas 2011)

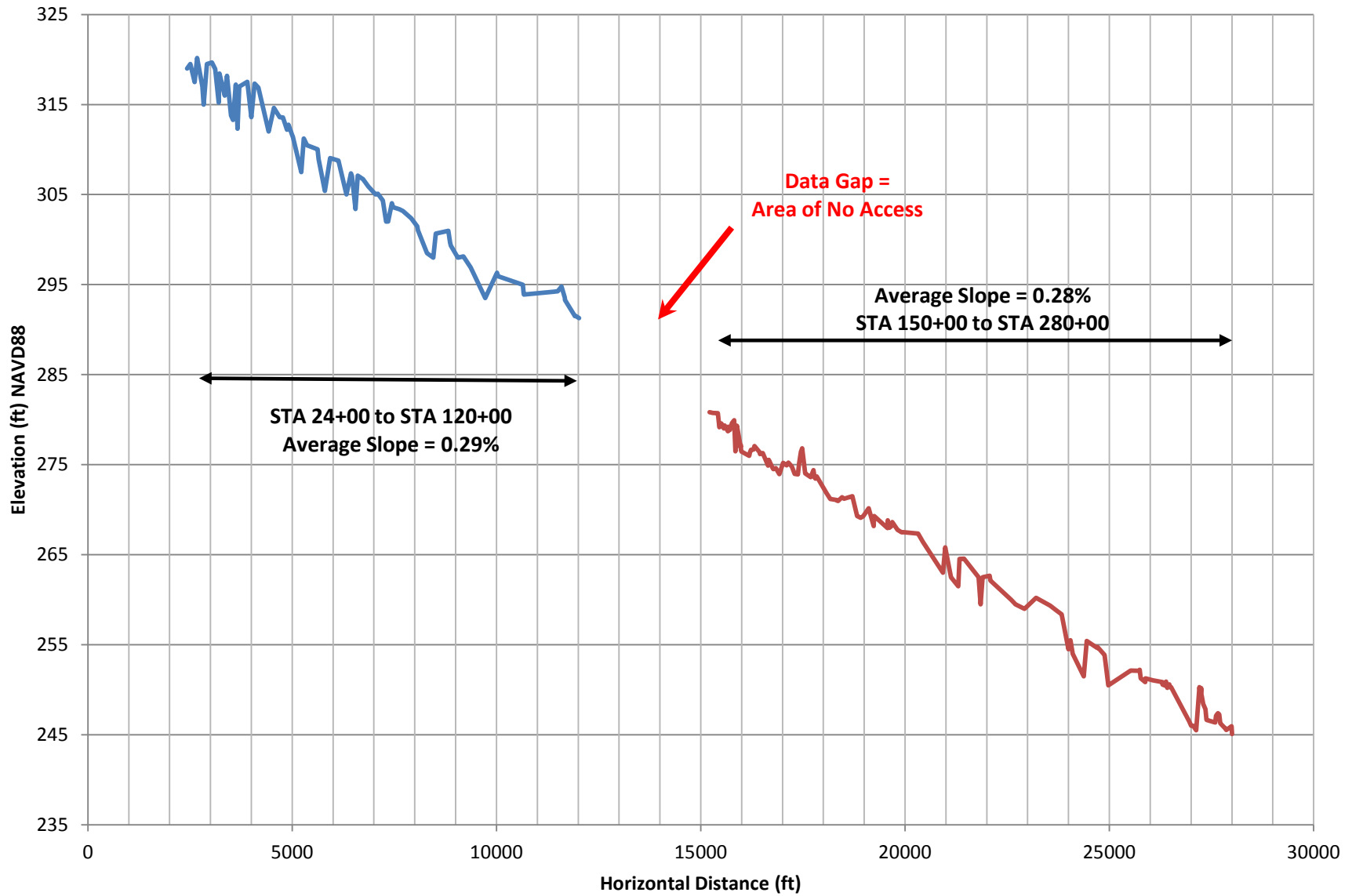
| | | STA Shift | REF ELEV |
|----------|---------|-----------|----------|
| | | 0 | -1 |
| STA | ELEV | ADJ STA | ADJ ELEV |
| 0 | 279.992 | 0 | 278.992 |
| 24.53073 | 280.102 | 24.53073 | 279.102 |
| 34.28541 | 274.916 | 34.28541 | 273.916 |
| 37.01994 | 274.64 | 37.01994 | 273.64 |
| 44.44424 | 269.502 | 44.44424 | 268.502 |
| 50.51537 | 263.83 | 50.51537 | 262.83 |
| 52.82972 | 262.758 | 52.82972 | 261.758 |
| 56.45208 | 258.909 | 56.45208 | 257.909 |
| 60.42383 | 258.51 | 60.42383 | 257.51 |
| 72.27611 | 259.843 | 72.27611 | 258.843 |
| 80.60856 | 260.877 | 80.60856 | 259.877 |
| 91.51096 | 261.442 | 91.51096 | 260.442 |
| 94.47757 | 262.77 | 94.47757 | 261.77 |
| 98.00396 | 265.345 | 98.00396 | 264.345 |
| 98.71842 | 265.521 | 98.71842 | 264.521 |
| 106.5834 | 266.054 | 106.5834 | 265.054 |
| 122.1886 | 269.949 | 122.1886 | 268.949 |
| 139.8924 | 270.394 | 139.8924 | 269.394 |
| 153.5394 | 275.385 | 153.5394 | 274.385 |
| 158.2016 | 276.138 | 158.2016 | 275.138 |
| 161.7348 | 277.282 | 161.7348 | 276.282 |
| 173.5746 | 277.589 | 173.5746 | 276.589 |
| 173.5746 | 277.589 | 173.5746 | 276.589 |
| 196.0438 | 277.947 | 196.0438 | 276.947 |
| 196.0438 | 277.947 | 196.0438 | 276.947 |
| 205.1517 | 278.102 | 205.1517 | 277.102 |

XS 4-22 (Storesund Consulting 2014)

| | | | STA Shift | REF ELEV |
|---------|----------|---------|-----------|----------|
| | | | 4 | 0 |
| Easting | Northing | Elev | ADJ STA | ADJ ELEV |
| 6415104 | 1966144 | 279.037 | 4 | 279.037 |
| 6415097 | 1966135 | 279.153 | 15.52963 | 279.153 |
| 6415093 | 1966130 | 279.114 | 21.68603 | 279.114 |
| 6415086 | 1966125 | 276.419 | 30.07148 | 276.419 |
| 6415082 | 1966122 | 273.124 | 35.44638 | 273.124 |
| 6415079 | 1966119 | 270.969 | 39.49599 | 270.969 |
| 6415077 | 1966118 | 268.014 | 42.22054 | 268.014 |
| 6415075 | 1966116 | 265.4 | 45.10421 | 265.4 |
| 6415073 | 1966113 | 263.995 | 48.11754 | 263.995 |
| 6415072 | 1966111 | 262.422 | 50.14705 | 262.422 |
| 6415071 | 1966110 | 260.976 | 51.68666 | 260.976 |
| 6415070 | 1966109 | 260.4 | 53.91842 | 260.4 |
| 6415069 | 1966107 | 259.78 | 55.57141 | 259.78 |
| 6415068 | 1966106 | 258.961 | 57.00131 | 258.961 |
| 6415063 | 1966101 | 258.844 | 64.00202 | 258.844 |
| 6415061 | 1966099 | 259.107 | 67.04801 | 259.107 |
| 6415057 | 1966095 | 260.257 | 72.44337 | 260.257 |
| 6415052 | 1966091 | 260.177 | 79.1785 | 260.177 |
| 6415050 | 1966088 | 260.622 | 82.71003 | 260.622 |
| 6415047 | 1966085 | 260.165 | 86.72783 | 260.165 |
| 6415044 | 1966083 | 260.31 | 90.66796 | 260.31 |
| 6415043 | 1966080 | 261.296 | 93.27731 | 261.296 |
| 6415041 | 1966078 | 262.078 | 96.62846 | 262.078 |
| 6415038 | 1966076 | 262.612 | 99.48235 | 262.612 |
| 6415036 | 1966074 | 264.001 | 103.1144 | 264.001 |
| 6415034 | 1966071 | 264.799 | 106.7201 | 264.799 |
| 6415033 | 1966068 | 265.793 | 109.1391 | 265.793 |
| 6415033 | 1966067 | 266.538 | 110.6724 | 266.538 |
| 6415032 | 1966064 | 268.374 | 113.4714 | 268.374 |
| 6415032 | 1966063 | 269.649 | 114.6067 | 269.649 |
| 6415030 | 1966060 | 272.473 | 117.8974 | 272.473 |
| 6415029 | 1966058 | 274.219 | 120.3533 | 274.219 |
| 6415019 | 1966052 | 277.1 | 132.7323 | 277.1 |

THALWEG SURVEY
UPPER NAPA RIVER

Upper Napa River Thalweg Profile



Thalweg Profile Data

| Easting (ft) | Northing (ft) | Station | Elev (ft) |
|--------------|---------------|---------|-----------|
| Sounding | | 2425 | 319 |
| Sounding | | 2510 | 319.5 |
| Sounding | | 2610 | 317.5 |
| 6398350.815 | 1971572.724 | 2675 | 320.181 |
| Sounding | | 2800 | 317.000 |
| Sounding | | 2830 | 315.000 |
| 6398505.824 | 1971398.785 | 2910 | 319.488 |
| 6398622.050 | 1971335.270 | 3038 | 319.668 |
| 6398681.125 | 1971288.221 | 3115 | 318.950 |
| Sounding | | 3200 | 315.200 |
| 6398771.560 | 1971236.569 | 3219 | 318.432 |
| Sounding | | 3350 | 316.000 |
| 6398937.822 | 1971161.878 | 3405 | 318.186 |
| Sounding | | 3500 | 313.800 |
| Sounding | | 3550 | 313.300 |
| 6399157.747 | 1971141.773 | 3622 | 317.217 |
| Sounding | | 3660 | 312.300 |
| 6399242.751 | 1971149.459 | 3708 | 316.997 |
| 6399427.173 | 1971108.200 | 3900 | 317.534 |
| Sounding | | 4000 | 313.600 |
| 6399596.615 | 1971079.292 | 4078 | 317.314 |
| 6399686.100 | 1971090.795 | 4170 | 316.888 |
| Sounding | | 4425 | 312.000 |
| 6400065.959 | 1971066.809 | 4553 | 314.629 |
| 6400198.164 | 1971015.588 | 4695 | 313.589 |
| 6400246.970 | 1970955.761 | 4775 | 313.557 |
| 6400313.486 | 1970901.716 | 4874 | 312.203 |
| 6400344.325 | 1970889.178 | 4910 | 312.757 |
| 6400434.570 | 1970853.010 | 5005 | 311.493 |
| 6400445.887 | 1970850.513 | 5015 | 311.471 |
| Sounding | | 5225 | 307.500 |
| 6400703.089 | 1970790.237 | 5282 | 311.213 |
| 6400782.932 | 1970779.113 | 5363 | 310.477 |
| 6401026.262 | 1970757.908 | 5620 | 310.030 |
| 6401042.857 | 1970737.029 | 5647 | 308.953 |
| Sounding | | 5800 | 305.400 |
| 6401307.817 | 1970660.350 | 5931 | 309.042 |
| 6401507.486 | 1970657.368 | 6130 | 308.762 |
| Sounding | | 6325 | 305.000 |
| 6401677.760 | 1970411.307 | 6440 | 307.355 |
| 6401691.956 | 1970396.461 | 6460 | 307.055 |
| Sounding | | 6550 | 303.400 |
| 6401810.466 | 1970318.167 | 6605 | 307.098 |
| 6401909.015 | 1970249.560 | 6736 | 306.703 |
| 6401986.546 | 1970149.982 | 6860 | 305.911 |

Thalweg Profile Data

| | | | | | |
|----------------------|-------------|-------|---------|-------|----------|
| 6402044.096 | 1969983.453 | 7040 | 305.017 | | |
| 6402050.378 | 1969929.875 | 7095 | 305.094 | | |
| 6402092.478 | 1969816.127 | 7216 | 304.357 | | |
| Sounding | | 7300 | 302.000 | | |
| Sounding | | 7350 | 302.000 | | |
| 6402253.691 | 1969660.287 | 7440 | 304.046 | | |
| 6402273.432 | 1969639.270 | 7470 | 303.601 | | |
| 6402400.766 | 1969566.510 | 7622 | 303.365 | | |
| 6402476.055 | 1969532.411 | 7710 | 303.182 | | |
| 6402643.679 | 1969432.130 | 7910 | 302.367 | | |
| 6402788.584 | 1969386.377 | 8060 | 301.484 | | |
| 6402802.677 | 1969376.278 | 8078 | 301.040 | | |
| Sounding | | 8300 | 298.500 | | |
| Sounding | | 8450 | 298.000 | | |
| 6403224.191 | 1969275.554 | 8515 | 300.659 | | |
| 6403491.285 | 1969146.124 | 8822 | 300.979 | | |
| 6403520.473 | 1969112.670 | 8865 | 299.663 | | |
| 6403537.907 | 1969109.496 | 8880 | 299.327 | | |
| 6403685.738 | 1969033.825 | 9055 | 297.990 | | |
| 6403816.224 | 1969003.346 | 9190 | 298.127 | | |
| 6403972.745 | 1968959.797 | 9365 | 296.910 | | |
| 6404005.910 | 1968889.508 | 9440 | 296.206 | | |
| Sounding | | 9725 | 293.500 | | |
| 6404352.216 | 1968451.079 | 10015 | 296.311 | | |
| 6404362.992 | 1968434.253 | 10035 | 295.917 | | |
| 6404790.718 | 1968007.079 | 10645 | 294.979 | | |
| 6404794.957 | 1967989.304 | 10666 | 294.072 | | |
| 6404798.836 | 1967980.165 | 10672 | 293.899 | | |
| 6405473.801 | 1968067.798 | 11390 | 294.200 | | |
| 6405582.130 | 1968045.172 | 11500 | 294.271 | | |
| 6405674.700 | 1968047.524 | 11590 | 294.795 | | |
| 6405757.169 | 1968061.203 | 11670 | 293.576 | | |
| 6405762.676 | 1968059.315 | 11680 | 293.272 | | |
| 6405966.546 | 1967962.658 | 11905 | 291.602 | | |
| 6405976.731 | 1967955.597 | 11915 | 291.510 | | |
| 6405986.658 | 1967947.580 | 11925 | 291.566 | | |
| 6406073.447 | 1967951.125 | 12020 | 291.292 | Slope | 0.002888 |
| DATA GAP - NO ACCESS | | | | | |
| 6408837.640 | 1967332.384 | 15215 | 280.826 | | |
| 6408916.408 | 1967346.273 | 15295 | 280.747 | | |
| 6409037.114 | 1967376.336 | 15420 | 280.725 | | |
| 6409075.513 | 1967377.792 | 15455 | 279.155 | | |
| 6409124.315 | 1967378.617 | 15505 | 279.577 | | |
| 6409174.472 | 1967409.517 | 15565 | 279.030 | | |
| 6409180.920 | 1967428.913 | 15585 | 279.360 | | |
| 6409216.246 | 1967543.955 | 15665 | 278.718 | | |

Thalweg Profile Data

| | | | |
|-------------|-------------|-------|---------|
| 6409219.086 | 1967511.807 | 15670 | 279.202 |
| 6409222.580 | 1967509.375 | 15675 | 278.861 |
| 6409224.298 | 1967501.031 | 15710 | 278.845 |
| 6409238.949 | 1967595.527 | 15760 | 279.612 |
| 6409275.392 | 1967643.950 | 15820 | 279.928 |
| 6409296.979 | 1967660.409 | 15845 | 276.483 |
| 6409337.028 | 1967669.363 | 15884 | 279.098 |
| 6409339.834 | 1967663.390 | 15885 | 279.332 |
| 6409351.110 | 1967660.332 | 15900 | 278.834 |
| 6409410.080 | 1967658.794 | 15960 | 277.399 |
| 6409516.221 | 1967664.366 | 15967 | 276.948 |
| 6409431.877 | 1967656.174 | 15980 | 277.155 |
| 6409432.429 | 1967656.756 | 15982 | 276.617 |
| 6409442.974 | 1967657.746 | 15995 | 276.463 |
| 6409629.887 | 1967626.496 | 16185 | 275.982 |
| 6409647.596 | 1967617.473 | 16205 | 276.371 |
| 6409670.572 | 1967602.508 | 16230 | 276.651 |
| 6409720.782 | 1967564.167 | 16293 | 276.687 |
| 6409734.279 | 1967548.884 | 16315 | 277.065 |
| 6409850.919 | 1967523.179 | 16437 | 276.398 |
| 6409862.818 | 1967527.653 | 16447 | 276.175 |
| 6409932.844 | 1967527.233 | 16517 | 276.283 |
| 6410055.795 | 1967500.550 | 16645 | 274.904 |
| 6410073.309 | 1967486.366 | 16665 | 275.527 |
| 6409961.752 | 1967522.966 | 16747 | 274.761 |
| 6410174.342 | 1967450.784 | 16775 | 274.509 |
| 6410235.591 | 1967437.410 | 16836 | 274.622 |
| 6410321.615 | 1967429.794 | 16925 | 273.943 |
| 6410409.209 | 1967394.693 | 17015 | 275.194 |
| 6410488.080 | 1967368.221 | 17098 | 274.930 |
| 6410528.262 | 1967342.840 | 17145 | 275.232 |
| 6410585.094 | 1967281.739 | 17230 | 274.792 |
| 6410632.906 | 1967237.542 | 17295 | 273.984 |
| 6410695.190 | 1967175.641 | 17380 | 273.928 |
| 6410715.058 | 1967160.087 | 17410 | 275.162 |
| 6410751.047 | 1967139.604 | 17448 | 276.423 |
| 6410767.669 | 1967112.789 | 17480 | 276.826 |
| 6410824.937 | 1967058.372 | 17555 | 274.031 |
| 6410892.176 | 1966946.208 | 17690 | 273.620 |
| 6410913.293 | 1966882.614 | 17760 | 274.406 |
| 6410936.264 | 1966866.811 | 17785 | 273.586 |
| 6410945.427 | 1966852.611 | 17805 | 273.439 |
| 6410962.685 | 1966824.101 | 17835 | 273.689 |
| 6411170.019 | 1966721.560 | 18070 | 271.881 |
| 6411263.948 | 1966688.051 | 18170 | 271.197 |
| 6411391.361 | 1966614.879 | 18320 | 271.068 |

Thalweg Profile Data

| | | | |
|-------------|-------------|-------|---------|
| 6411413.379 | 1966602.300 | 18340 | 270.983 |
| 6411425.996 | 1966593.881 | 18360 | 270.966 |
| 6411514.827 | 1966545.995 | 18460 | 271.393 |
| 6411544.743 | 1966510.560 | 18510 | 271.221 |
| 6411683.938 | 1966370.048 | 18710 | 271.485 |
| 6411765.084 | 1966282.519 | 18828 | 269.309 |
| 6411845.972 | 1966269.611 | 18910 | 269.093 |
| 6411903.388 | 1966292.416 | 18975 | 269.262 |
| 6411990.923 | 1966373.166 | 19110 | 270.166 |
| 6412108.752 | 1966386.406 | 19230 | 268.184 |
| 6412119.013 | 1966388.045 | 19240 | 268.933 |
| 6412124.824 | 1966390.384 | 19247 | 269.301 |
| 6412437.746 | 1966401.017 | 19570 | 267.947 |
| 6412445.288 | 1966401.210 | 19577 | 268.825 |
| 6412472.063 | 1966394.299 | 19610 | 267.991 |
| 6412535.192 | 1966401.429 | 19667 | 268.170 |
| 6412550.175 | 1966399.457 | 19685 | 268.616 |
| 6412672.705 | 1966350.203 | 19815 | 267.769 |
| 6412732.816 | 1966279.346 | 19905 | 267.514 |
| 6412742.483 | 1966267.765 | 19922 | 267.481 |
| 6412749.953 | 1966256.941 | 19934 | 267.515 |
| 6413106.990 | 1966158.306 | 20318 | 267.347 |
| 6413224.923 | 1966166.922 | 20435 | 266.433 |
| Sounding | | 20925 | 263.000 |
| 6413761.672 | 1966219.176 | 20985 | 265.808 |
| Sounding | | 21125 | 262.500 |
| Sounding | | 21300 | 261.500 |
| 6414072.210 | 1966141.165 | 21335 | 264.542 |
| 6414116.904 | 1966041.409 | 21445 | 264.561 |
| Sounding | | 21800 | 262.500 |
| Sounding | | 21850 | 259.500 |
| Sounding | | 21900 | 262.500 |
| 6414629.144 | 1966092.058 | 22068 | 262.659 |
| 6414642.317 | 1966102.046 | 22085 | 262.133 |
| Sounding | | 22600 | 260.000 |
| Sounding | | 22700 | 259.500 |
| Sounding | | 22925 | 259.000 |
| 6415510.272 | 1965801.031 | 23205 | 260.205 |
| 6415798.638 | 1965776.737 | 23550 | 259.343 |
| 6415903.296 | 1965682.770 | 23710 | 258.784 |
| 6415960.544 | 1965571.826 | 23835 | 258.378 |
| Sounding | | 24000 | 254.50 |
| Sounding | | 24050 | 255.50 |
| Sounding | | 24100 | 254.00 |
| Sounding | | 24375 | 251.50 |
| 6416392.312 | 1965276.910 | 24445 | 255.419 |

Thalweg Profile Data

| | | | | | |
|-------------|-------------|-------|---------|--------|----------|
| 6416615.510 | 1965408.130 | 24705 | 254.649 | | |
| 6416618.963 | 1965403.178 | 24708 | 254.766 | | |
| 6416774.536 | 1965351.364 | 24880 | 253.860 | | |
| Sounding | | 24975 | 250.500 | | |
| 6416948.121 | 1964747.529 | 25520 | 252.136 | | |
| 6417116.567 | 1964613.038 | 25730 | 252.105 | | |
| 6417135.659 | 1964604.532 | 25745 | 252.217 | | |
| 6417153.006 | 1964599.303 | 25765 | 251.258 | | |
| 6417224.453 | 1964507.532 | 25880 | 250.845 | | |
| 6417228.583 | 1964501.823 | 25885 | 251.263 | | |
| 6417329.091 | 1964349.985 | 26070 | 251.054 | | |
| 6417386.707 | 1964126.770 | 26300 | 250.841 | | |
| 6417401.655 | 1964128.680 | 26300 | 250.574 | | |
| 6417344.618 | 1964056.388 | 26368 | 250.474 | | |
| 6417358.406 | 1964034.229 | 26385 | 250.903 | | |
| 6417359.685 | 1964009.640 | 26420 | 250.212 | | |
| 6417338.965 | 1963968.472 | 26455 | 250.430 | | |
| 6417339.232 | 1963954.755 | 26470 | 250.609 | | |
| 6417340.543 | 1963942.362 | 26485 | 250.287 | | |
| 6417340.152 | 1963918.953 | 26510 | 250.301 | | |
| Sounding | | 26950 | 246.500 | | |
| Sounding | | 27000 | 246.000 | | |
| Sounding | | 27050 | 246.000 | | |
| Sounding | | 27125 | 245.500 | | |
| 6417328.262 | 1963247.263 | 27205 | 250.287 | | |
| 6417358.011 | 1963238.105 | 27230 | 249.279 | | |
| 6417366.570 | 1963225.056 | 27245 | 250.176 | | |
| 6417374.042 | 1963220.713 | 27255 | 249.495 | | |
| 6417406.951 | 1963209.080 | 27285 | 248.728 | | |
| 6417418.829 | 1963197.965 | 27295 | 248.427 | | |
| 6417438.028 | 1963154.652 | 27350 | 247.833 | | |
| 6417450.330 | 1963135.189 | 27375 | 246.671 | | |
| 6417454.026 | 1963126.645 | 27380 | 246.646 | | |
| 6417495.421 | 1962903.598 | 27590 | 246.377 | | |
| 6417500.594 | 1962885.102 | 27610 | 247.093 | | |
| 6417510.933 | 1962863.803 | 27630 | 247.229 | | |
| 6417533.657 | 1962842.406 | 27660 | 247.389 | | |
| 6417546.674 | 1962821.130 | 27690 | 247.253 | | |
| 6417551.187 | 1962794.080 | 27715 | 246.294 | | |
| 6417606.757 | 1962694.002 | 27835 | 245.706 | | |
| 6417614.483 | 1962681.300 | 27850 | 245.696 | | |
| 6417621.759 | 1962672.858 | 27860 | 245.539 | | |
| 6417686.495 | 1962571.761 | 27990 | 245.955 | | |
| 6417705.756 | 1962554.897 | 28005 | 245.093 | slope= | 0.002794 |